



US007152079B2

(12) **United States Patent**
Hirakawa et al.

(10) **Patent No.:** **US 7,152,079 B2**
(45) **Date of Patent:** **Dec. 19, 2006**

(54) **DATA REPLICATION AMONG STORAGE SYSTEMS**

(75) Inventors: **Yusuke Hirakawa**, Odawara (JP);
Hiroshi Arakawa, Sagamiyara (JP);
Takahito Takeda, Minamiashigara (JP);
Takao Soto, Odawara (JP)

(73) Assignee: **Hitachi, Ltd.**, Tokyo (JP)

(*) Notice: Subject to any disclaimer, the term of this patent is extended or adjusted under 35 U.S.C. 154(b) by 317 days.

(21) Appl. No.: **10/650,338**

(22) Filed: **Aug. 27, 2003**

(65) **Prior Publication Data**

US 2004/0267829 A1 Dec. 30, 2004

(30) **Foreign Application Priority Data**

Jun. 27, 2003 (JP) 2003-183734

(51) **Int. Cl.**

G06F 12/00 (2006.01)

G06F 11/00 (2006.01)

(52) **U.S. Cl.** **707/204**; 714/6; 711/162

(58) **Field of Classification Search** 707/200,
707/1, 204; 714/6; 711/162

See application file for complete search history.

(56) **References Cited**

U.S. PATENT DOCUMENTS

- 5,155,845 A 10/1992 Beal et al.
- 5,170,480 A 12/1992 Mohan et al.
- 5,307,481 A 4/1994 Shimazaki et al.
- 5,379,418 A 1/1995 Shimazaki et al.
- 5,459,857 A 10/1995 Ludlam et al.
- 5,544,347 A 8/1996 Yanai et al.
- 5,555,371 A * 9/1996 Duyanovich et al. 714/13
- 5,682,513 A * 10/1997 Candelaria et al. 711/113
- 5,720,029 A 2/1998 Kern et al.

- 5,734,818 A 3/1998 Kern et al.
- 5,742,792 A 4/1998 Yanai et al.
- 5,799,323 A 8/1998 Mosher et al. 707/202
- 5,835,953 A 11/1998 Ohran 711/162
- 5,901,327 A 5/1999 Ofek
- 5,933,653 A 8/1999 Ofek
- 5,974,563 A 10/1999 Beeler
- 5,995,980 A 11/1999 Olson et al. 707/201
- 6,044,444 A 3/2000 Ofek
- 6,052,758 A 4/2000 Crockett et al. 711/113
- 6,092,066 A 7/2000 Ofek

(Continued)

FOREIGN PATENT DOCUMENTS

EP 0902370 A 3/1999

(Continued)

OTHER PUBLICATIONS

Lyon "Tandem's Remote Data Facility," IEEE Feb.-Mar. 1990, pp. 562-567 (1990).

(Continued)

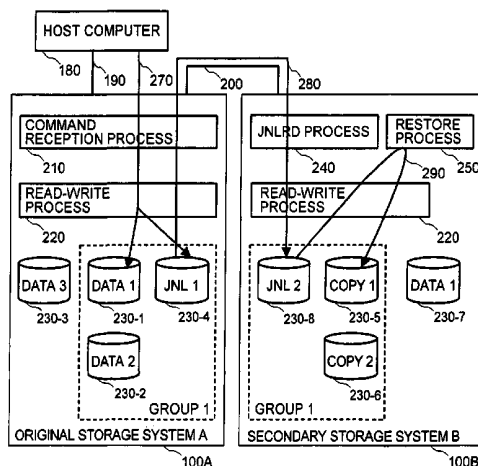
Primary Examiner—Sathyanarayan Pannala

(74) *Attorney, Agent, or Firm*—Mattingly, Stanger, Malur & Brundidge, P.C.

(57) **ABSTRACT**

A first storage system stores information relating to the updating of data stored in that system as a journal. More specifically, the journal is composed of a copy of data that was used for updating and update information such as a write command used during updating. Furthermore, the second storage system acquires the journal via a communication line between the first storage system and the second storage system. The second storage system holds a duplicate of the data held by the first storage system and updates the data corresponding to the data of the first storage system in the data update order of the first storage system by using the journal.

34 Claims, 21 Drawing Sheets



U.S. PATENT DOCUMENTS

6,101,497	A	8/2000	Ofek	
6,148,383	A	11/2000	Micka et al.	711/162
6,157,991	A	12/2000	Arnon	
6,173,377	B1	1/2001	Yanai et al.	
6,178,427	B1	1/2001	Parker	
6,209,002	B1	3/2001	Gagne et al.	
6,282,610	B1	8/2001	Bergsten	
6,308,283	B1	10/2001	Galipeau	
6,324,654	B1	11/2001	Wahl et al.	
6,360,306	B1	3/2002	Bergsten	
6,363,462	B1	3/2002	Bergsten	
6,393,538	B1	5/2002	Murayama	
6,397,307	B1	5/2002	Ohran	
6,408,370	B1	6/2002	Yamamoto et al.	
6,442,706	B1	8/2002	Wahl et al.	
6,446,176	B1	9/2002	West et al.	
6,460,055	B1	10/2002	Midgley et al.	
6,463,501	B1	10/2002	Kern et al.	711/100
6,467,034	B1	10/2002	Yanaka	
6,477,627	B1	11/2002	Ofek	
6,487,645	B1	11/2002	Clark et al.	
6,496,908	B1	12/2002	Kamvysselis et al.	
6,526,487	B1	2/2003	Ohran et al.	
6,560,617	B1*	5/2003	Winger et al.	707/204
6,598,134	B1*	7/2003	Ofek et al.	711/162
6,622,152	B1	9/2003	Sinn et al.	
6,625,623	B1	9/2003	Midgley et al.	707/204
6,662,197	B1	12/2003	LeCrone et al.	707/204
6,804,676	B1	10/2004	Bains	707/101
6,883,122	B1	4/2005	Maple et al.	714/54
6,941,322	B1	9/2005	Bills et al.	707/103
6,959,369	B1	10/2005	Ashton et al.	711/162
6,968,349	B1	11/2005	Owen et al.	707/204
2001/0029570	A1	10/2001	Yamamoto et al.	711/113
2002/0133511	A1	9/2002	Hostetter et al.	

2002/0143888	A1	10/2002	Lisiecki et al.	
2003/0014432	A1	1/2003	Teloh et al.	
2003/0014433	A1	1/2003	Teloh et al.	
2003/0074378	A1	4/2003	Midgley et al.	
2003/0074600	A1*	4/2003	Tamatsu	714/6
2003/0084075	A1	5/2003	Balogh et al.	707/204
2003/0204479	A1	10/2003	Bills et al.	707/1
2003/0217031	A1	11/2003	Owen et al.	707/1
2003/0220935	A1	11/2003	Vivian et al.	
2003/0229764	A1	12/2003	Ohno et al.	714/5
2004/0030703	A1	2/2004	Bourbonnais et al.	707/100
2004/0059738	A1	3/2004	Tarbell	707/100
2004/0117344	A1*	6/2004	Yang	707/1
2004/0250031	A1*	12/2004	Ji et al.	711/162
2005/0038968	A1	2/2005	Iwamura et al.	711/162
2005/0050115	A1	3/2005	Kekre	707/204

FOREIGN PATENT DOCUMENTS

EP	1 283 469	A2	2/2003
EP	1283469		2/2003
JP	62-274448		11/1987
JP	02-037418		2/1990
JP	07-191811		7/1995
JP	7-244597		9/1995

OTHER PUBLICATIONS

- "Replication Guide and Reference V7: Document No. SC26-9920-00", IBM DB2 Guide, 2000, 455 pages.
- "Replication Guide and Reference V8: Document No. SC27-1121-01", IBM DB2 Guide, 2003, 789 pages.
- "IBM DB2 RepliData for z/OS, Version 3.1", IBM DB2 Guide, Mar. 2003, 2 pages.
- IBM DB2 DataPropagator for z/OS, Version 8.1, IBM DB2 Guide, 2002, 4 pages.

* cited by examiner

FIG.1

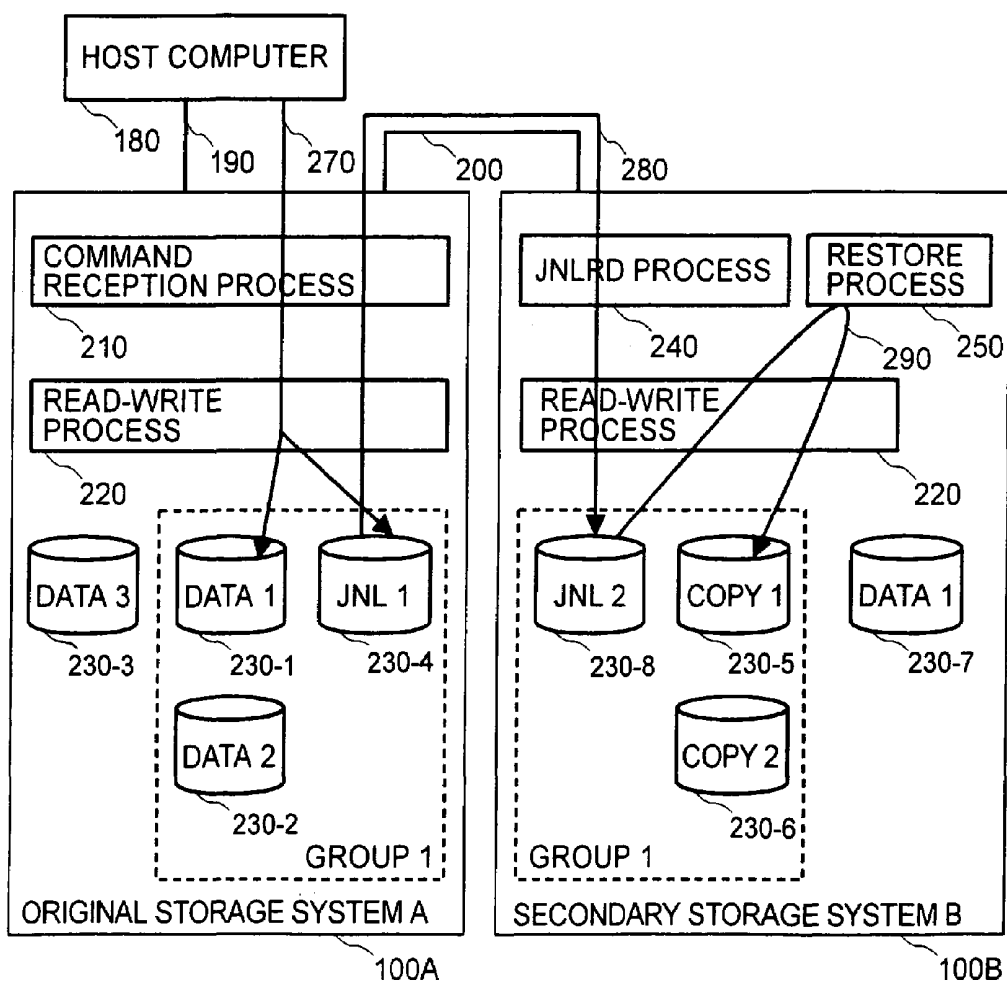


FIG. 2

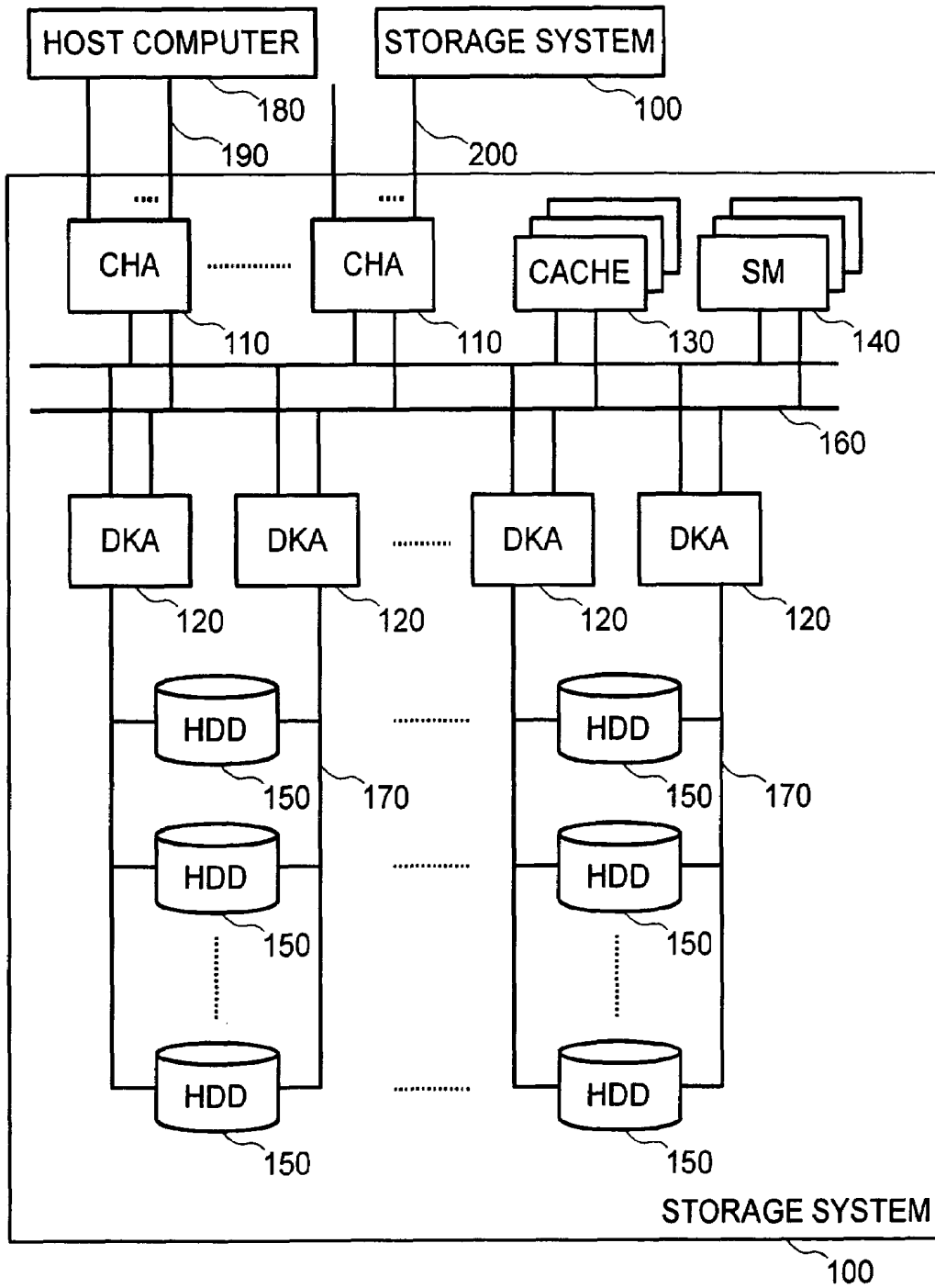


FIG.3

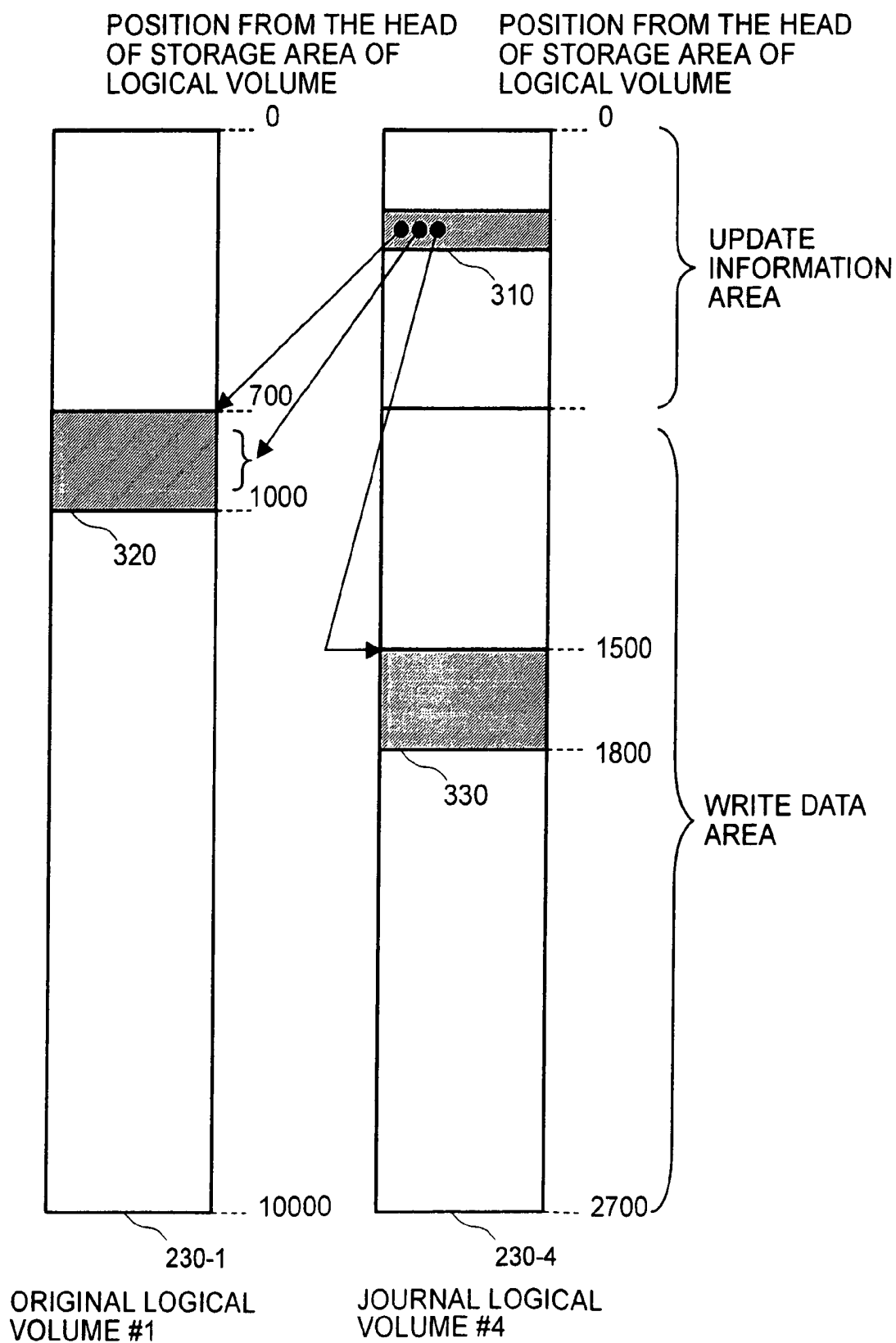


FIG.4

LOGICAL VOLUME NUMBER	VOLUME STATE	FORMAT	CAPACITY	PAIR NUMBER	PHYSICAL ADDRESS	
					STORAGE DEVICE NUMBER	POSITION FROM THE HEAD
1	ORIGINAL	OPEN3	3	1	1	0
2	ORIGINAL	OPEN6	6	2	1	3
3	BLANK	OPEN6	6	0	1	9
4	NORMAL	OPEN9	9	0	2	0
5	NORMAL	OPEN3	3	0	2	9
6	BLANK	OPEN6	6	0	2	12

400 VOLUME INFORMATION

FIG.5

PAIR NUMBER	PAIR STATE	ORIGINAL STORAGE SYSTEM NUMBER	ORIGINAL LOGICAL VOLUME NUMBER	SECOND STORAGE SYSTEM NUMBER	SECOND LOGICAL VOLUME NUMBER	GROUP NUMBER	COPY COMPLETE ADDRESS
2	NORMAL	1	2	2	3	1	0
3	BLANK	0	0	0	0	0	0
4	BLANK	0	0	0	0	0	0
5	BLANK	0	0	0	0	0	0

500 PAIR INFORMATION

FIG.6

GROUP NUMBER	GROUP STATE	PAIR SET	JOURNAL LOGICAL VOLUME NUMBER	UPDATE NUMBER
2	BLANK	0	0	0

600 GROUP INFORMATION

FIG. 7

	LOGICAL ADDRESS	
	LOGICAL VOLUME NUMBER	POSITION FROM THE HEAD OF STORAGE AREA OF LOGICAL VOLUME
UPDATE INFORMATION AREA HEAD ADDRESS	4	0
WRITE DATA AREA HEAD ADDRESS	4	700
UPDATE INFORMATION NEWEST ADDRESS	4	500
UPDATE INFORMATION OLDEST ADDRESS	4	200
WRITE DATA NEWEST ADDRESS	4	2200
WRITE DATA OLDEST ADDRESS	4	1300
READ INITIATION ADDRESS	4	400
RETRY INITIATION ADDRESS	4	300

701 POINTER INFORMATION

FIG.8

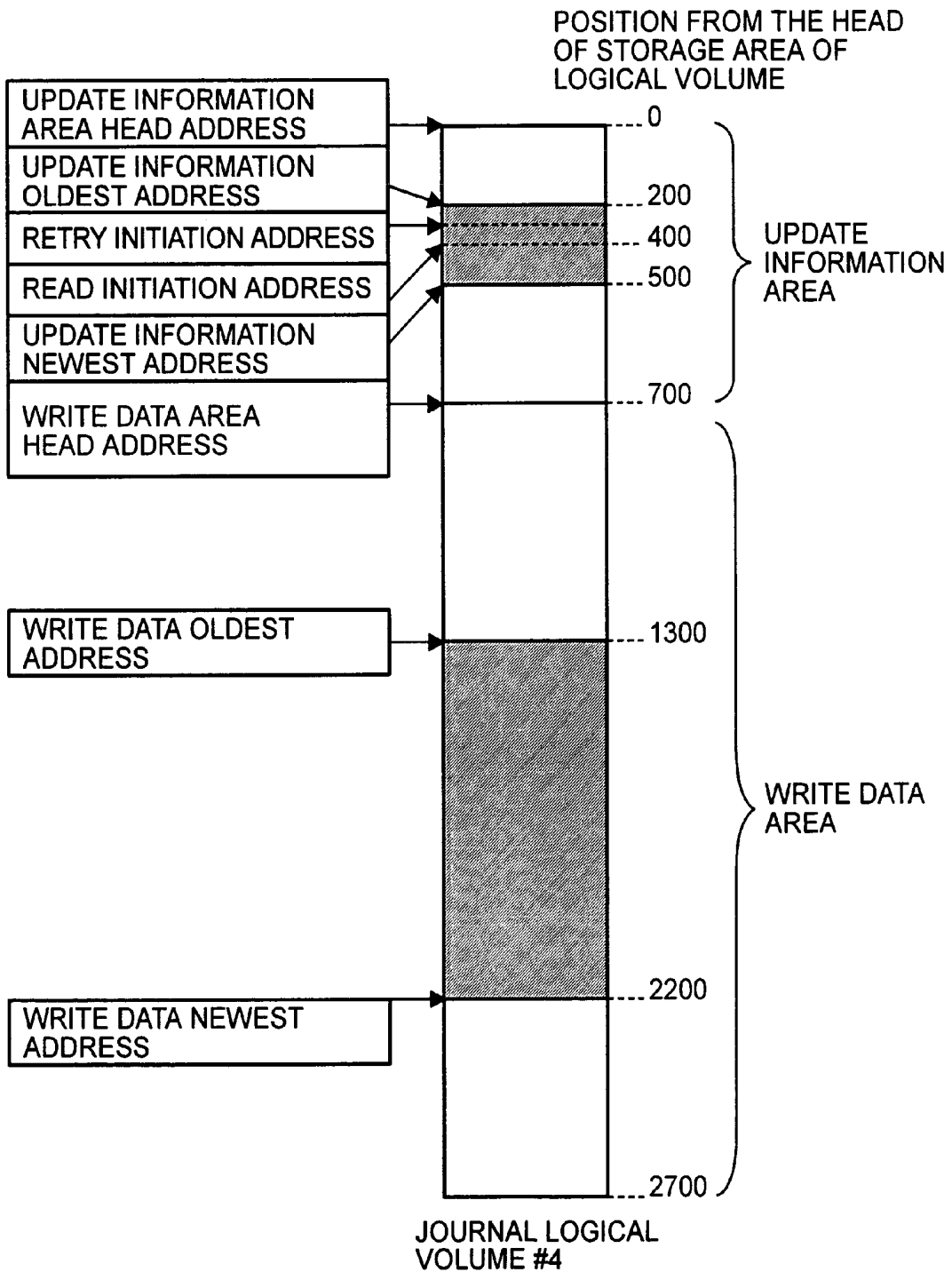


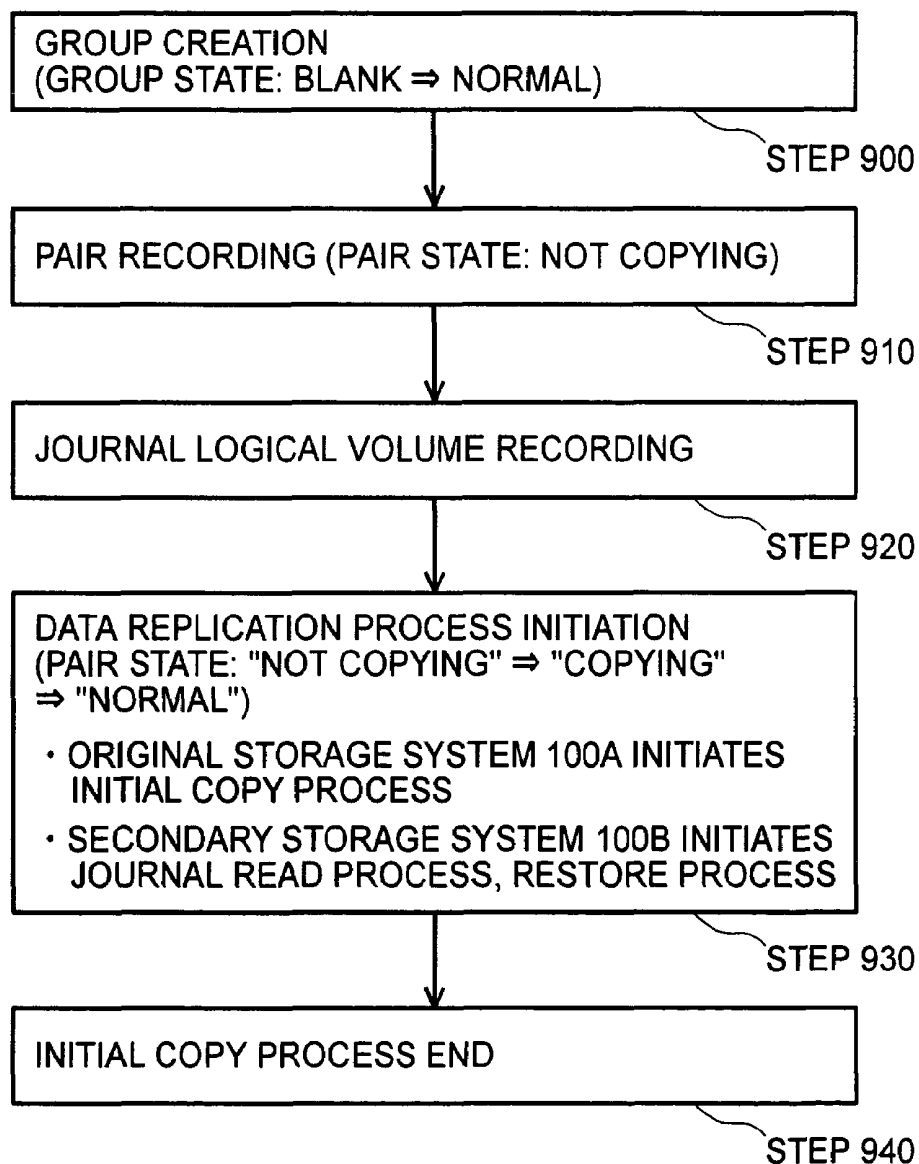
FIG. 9

FIG.10

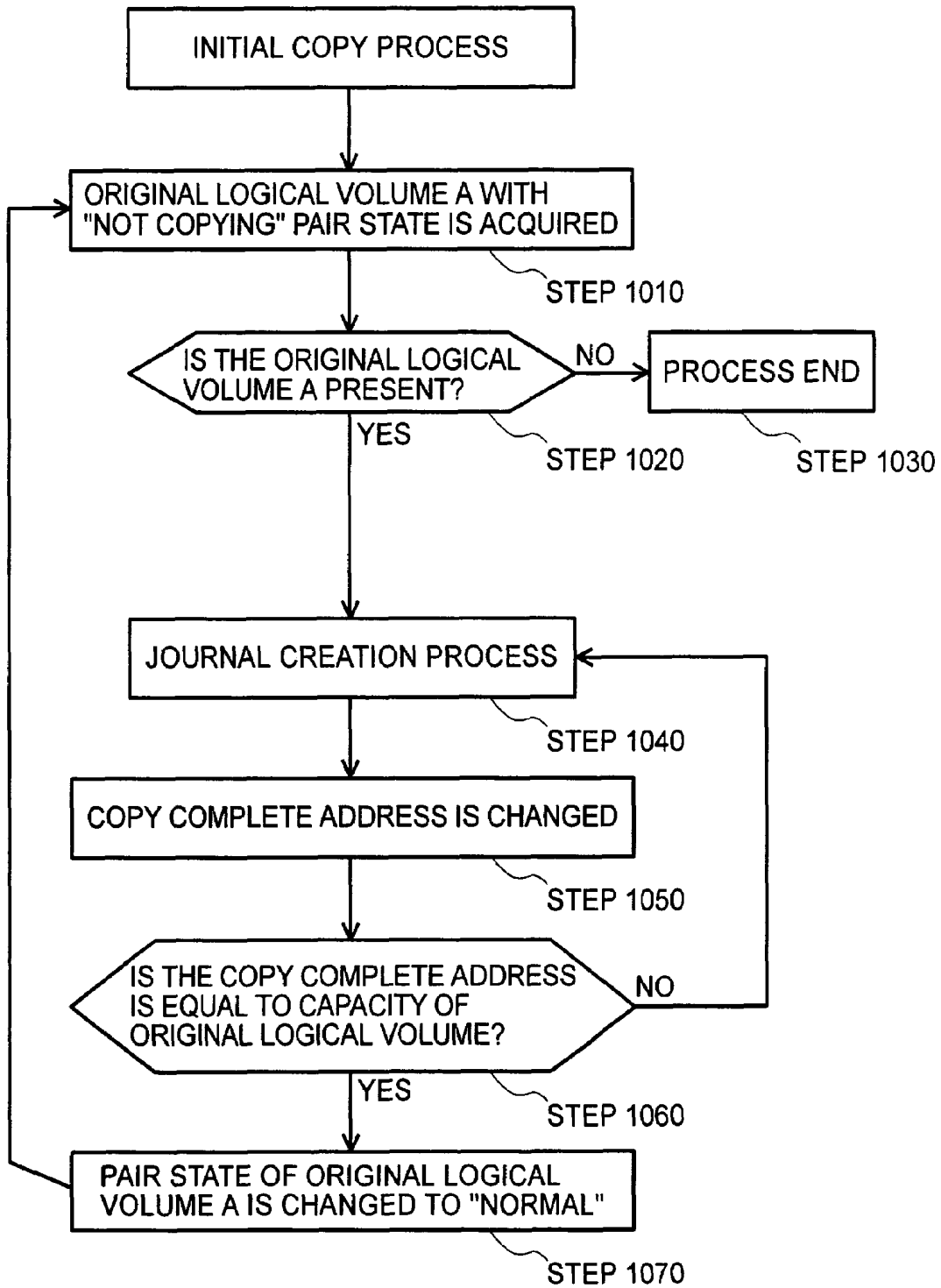


FIG.11

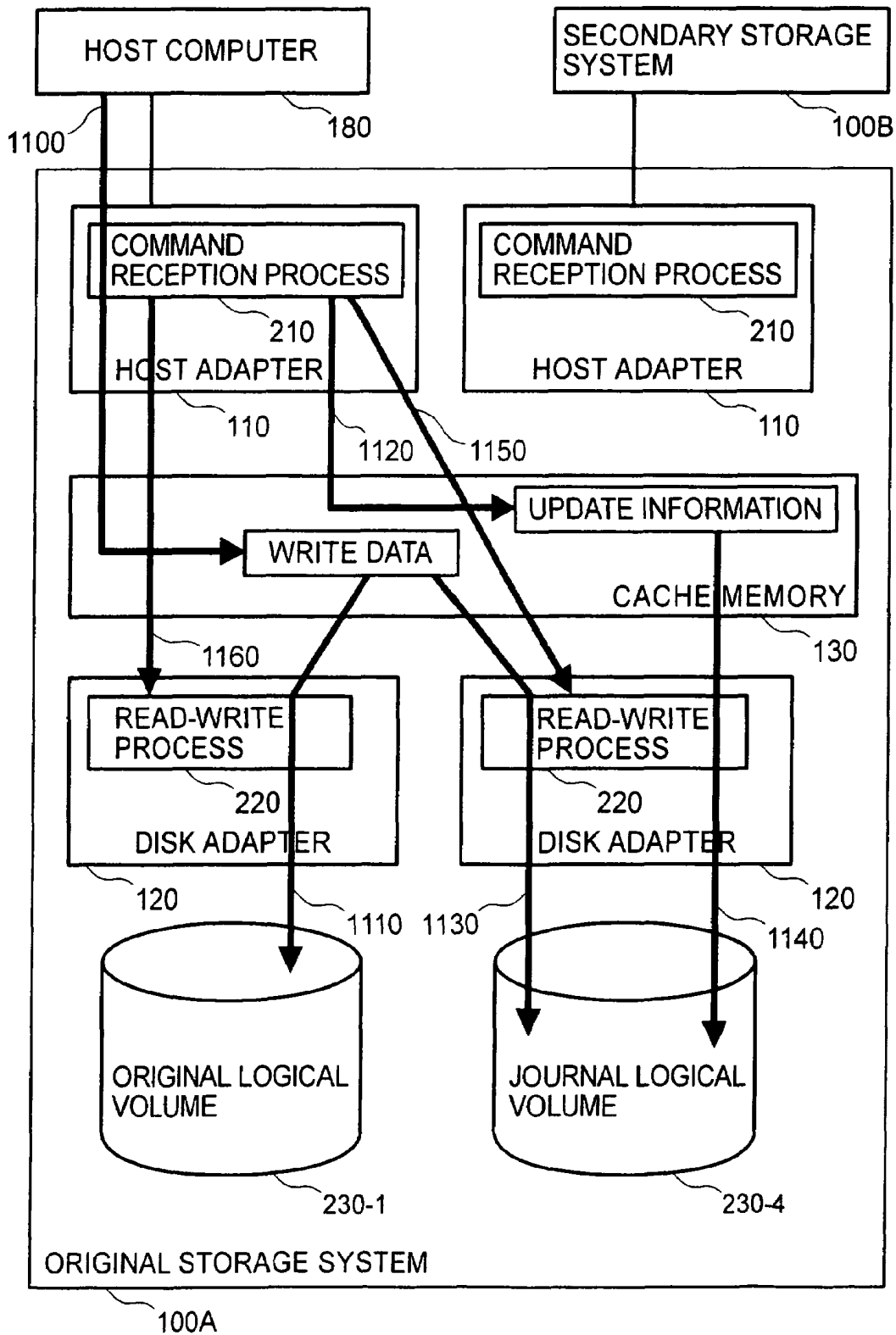


FIG.12

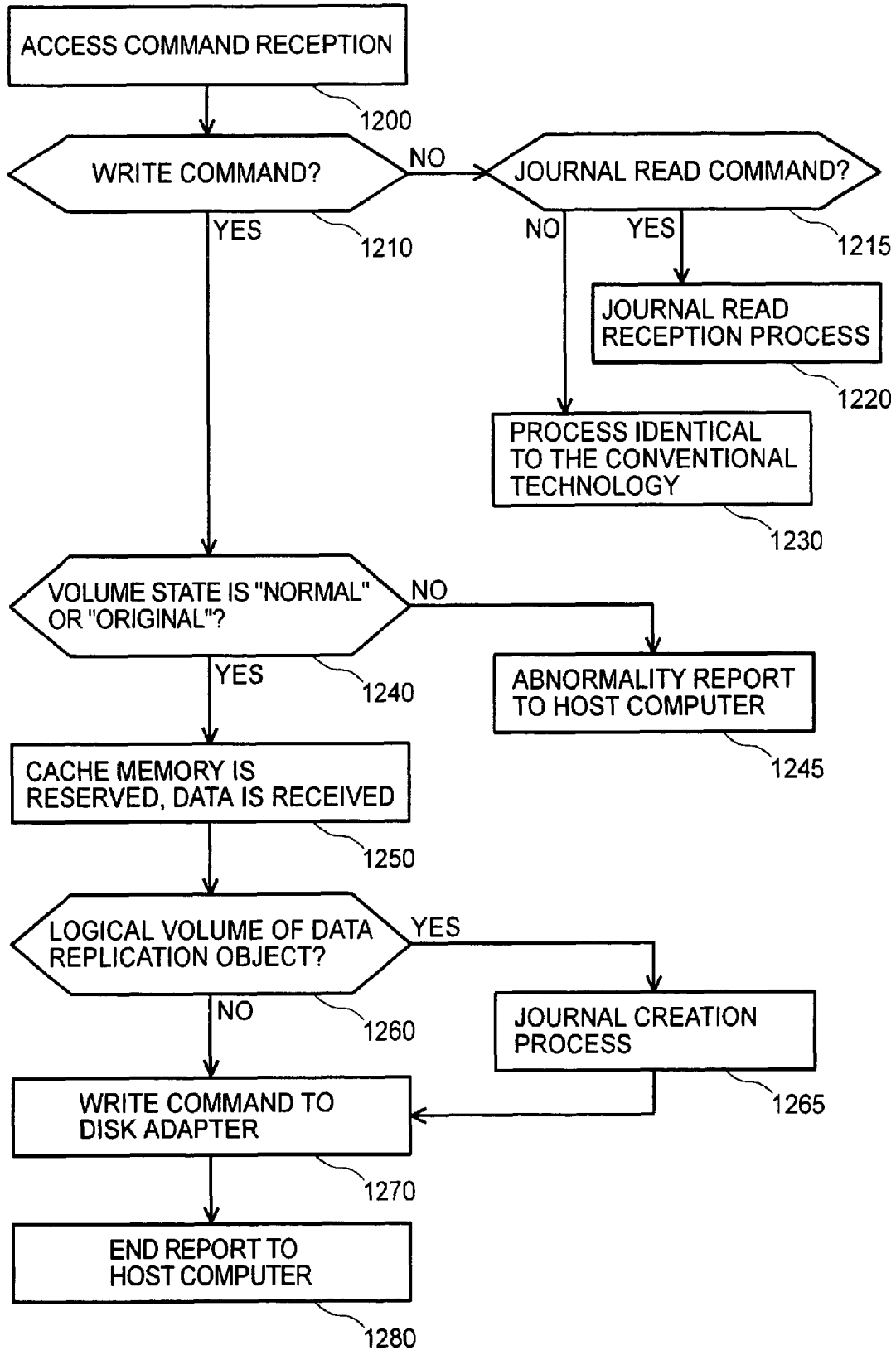


FIG.13

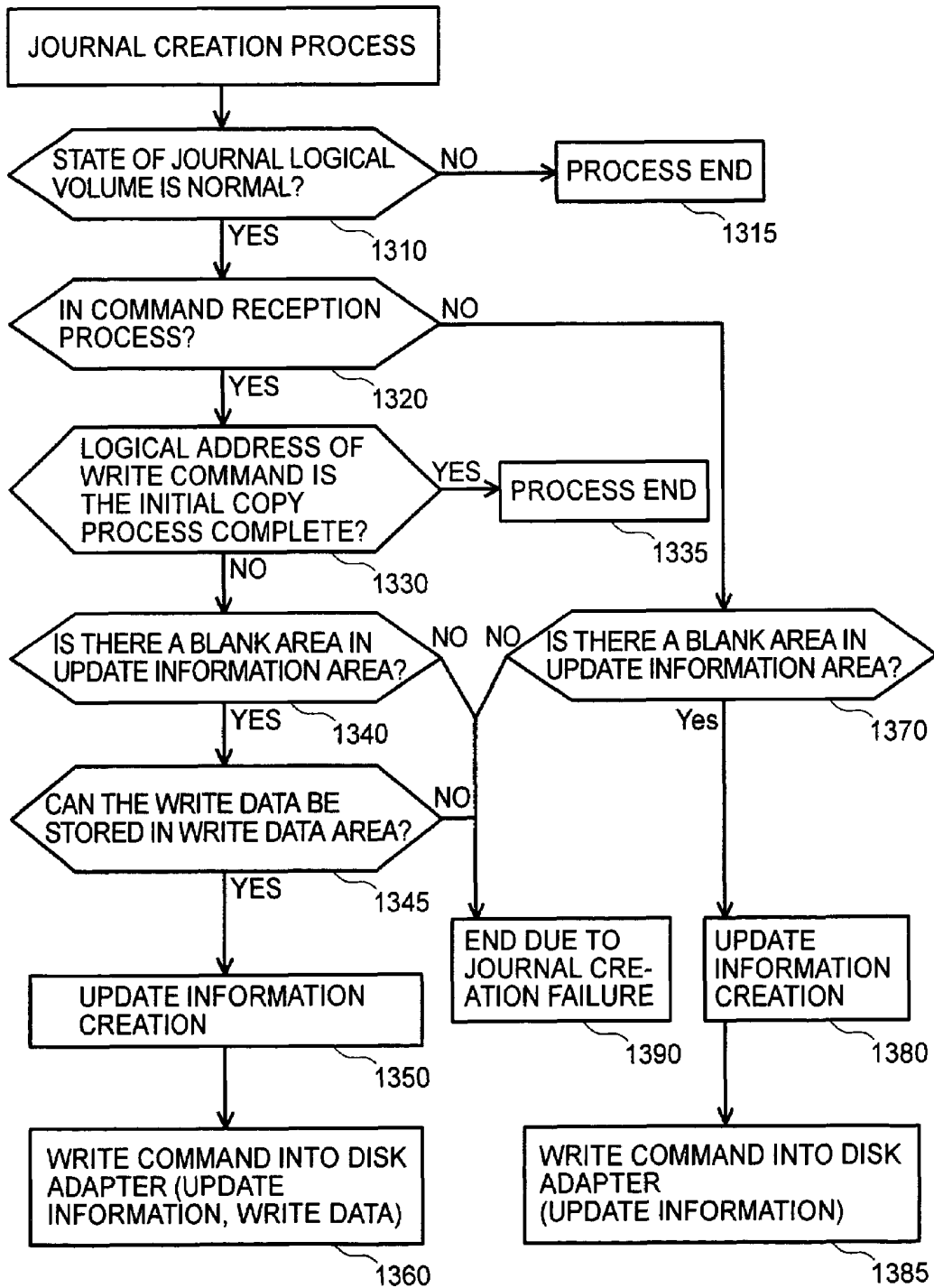


FIG.14

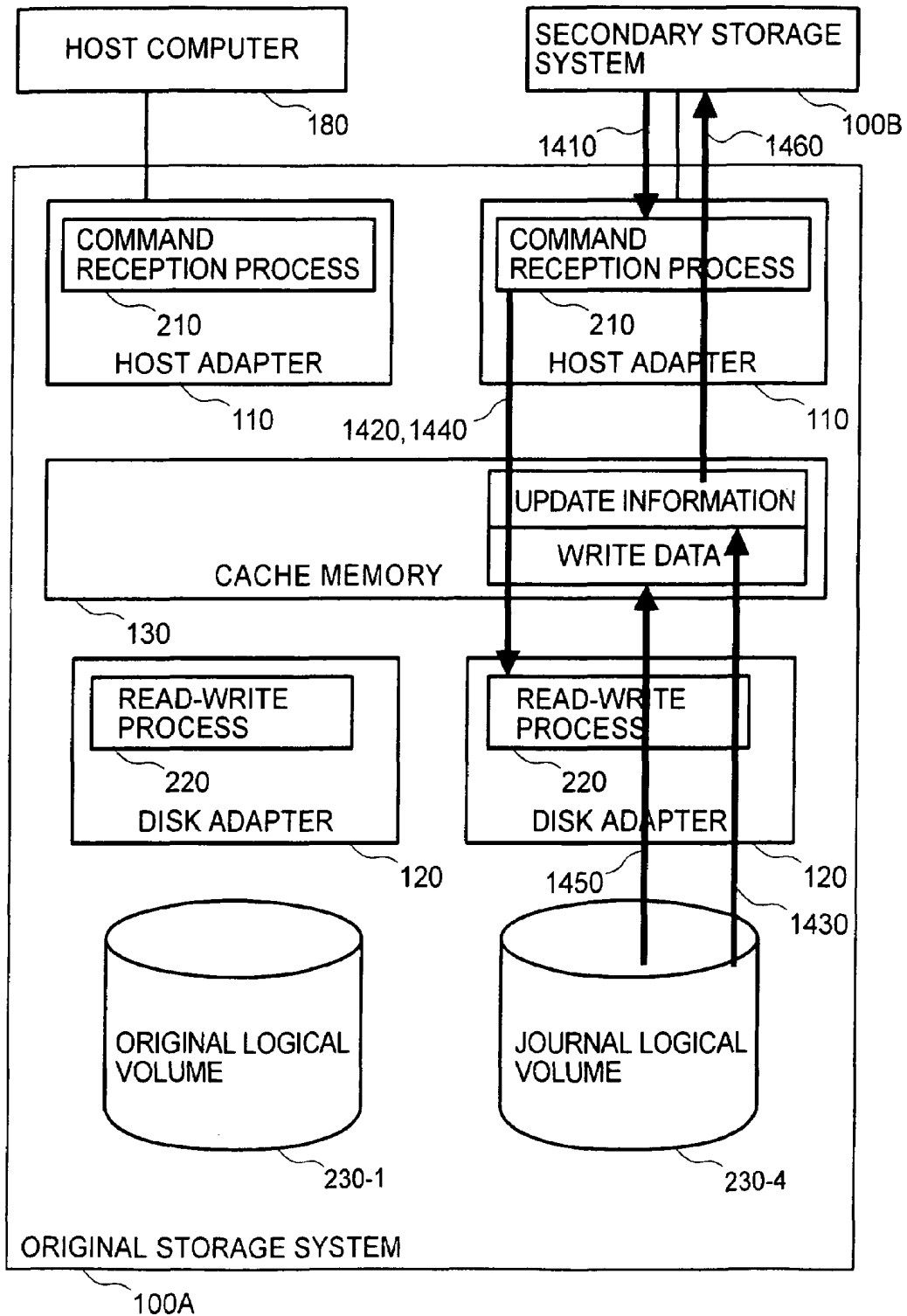


FIG.15

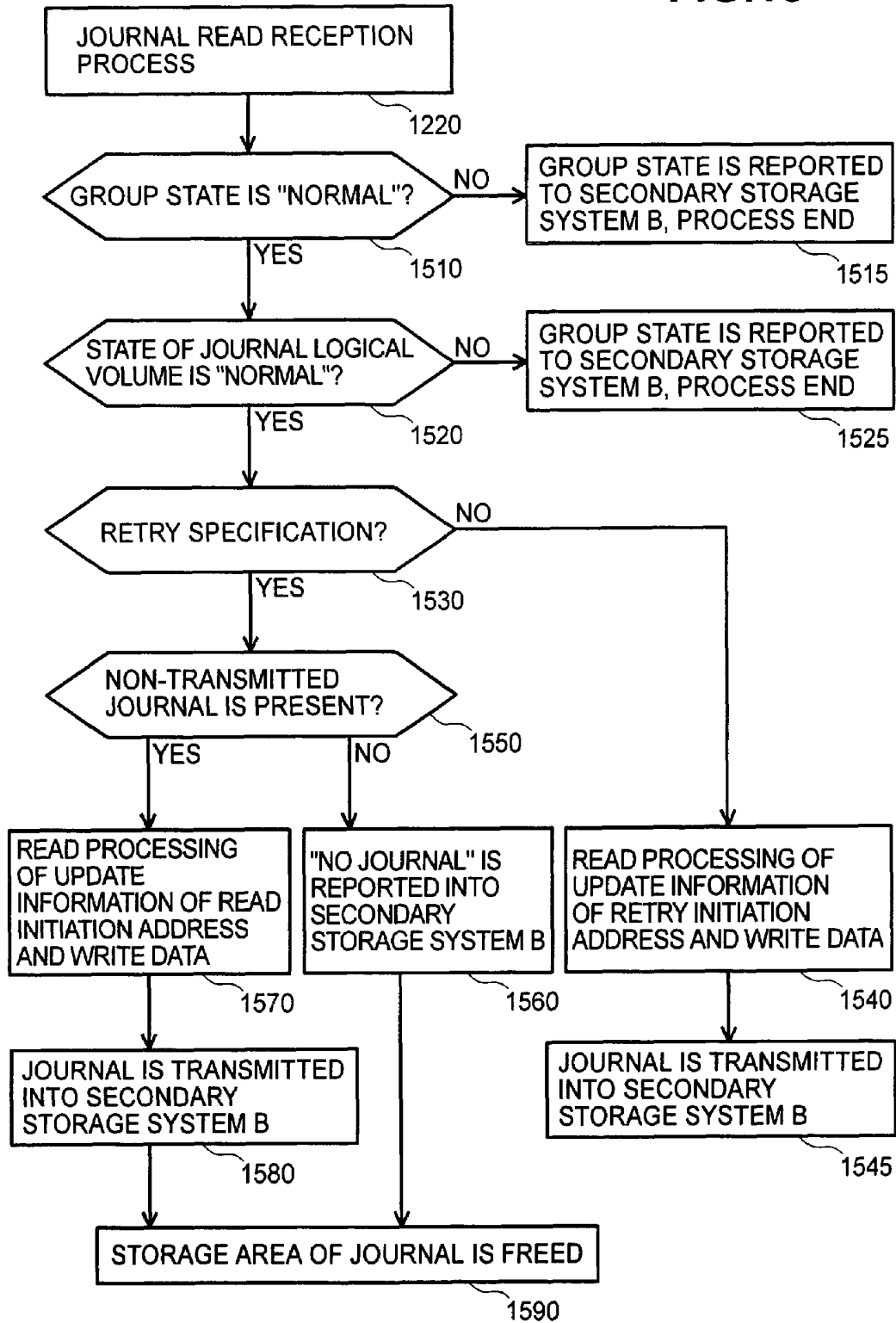


FIG.16

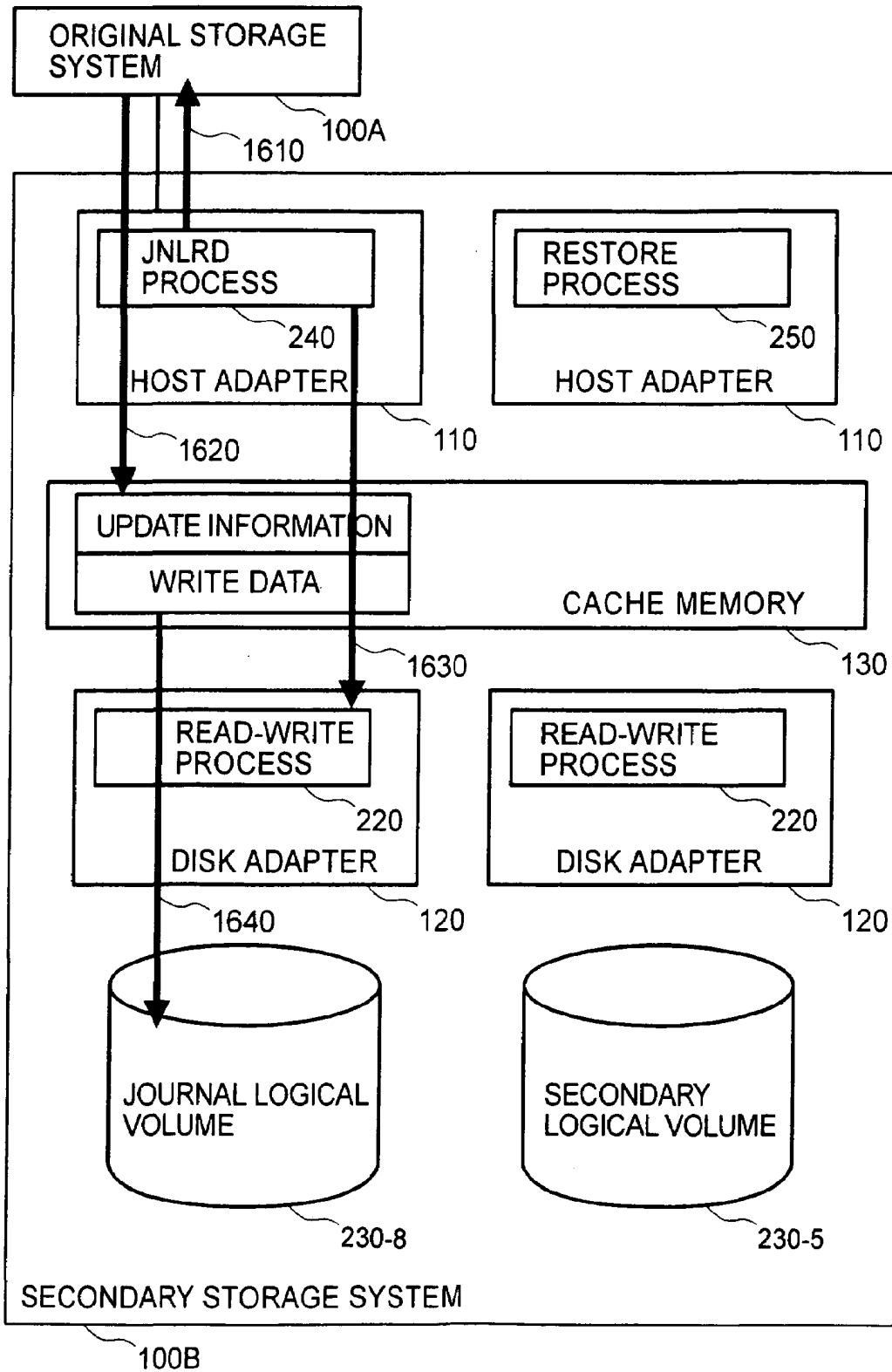


FIG.17

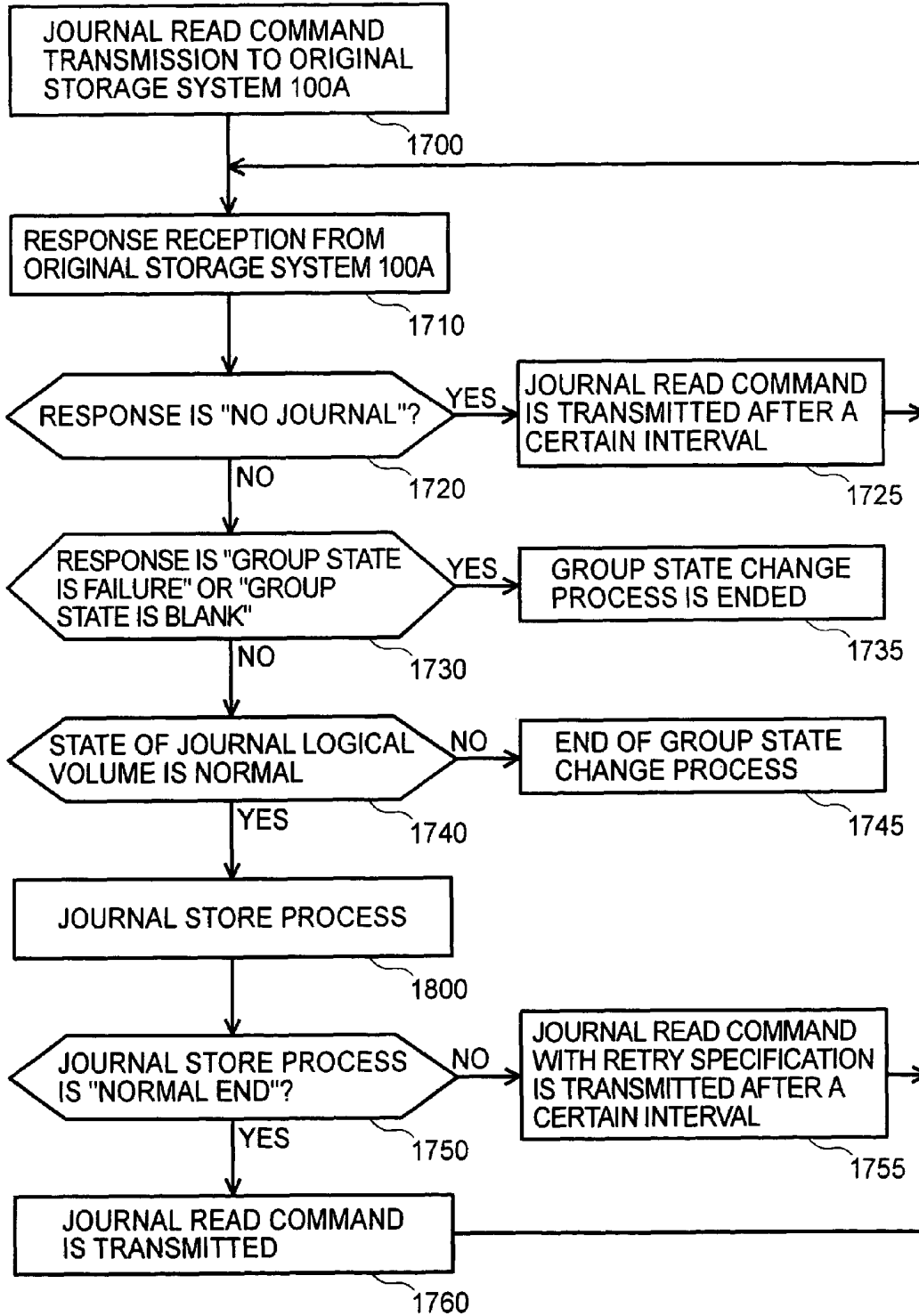


FIG.18

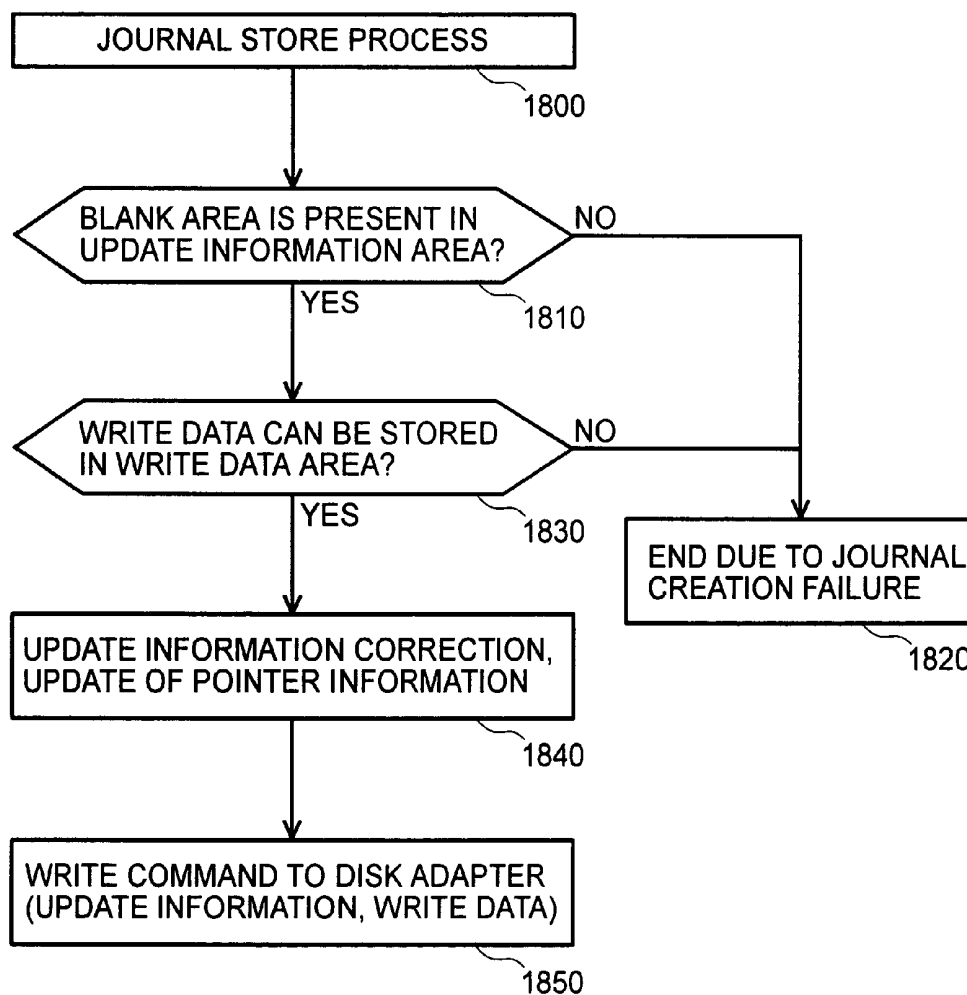


FIG.19

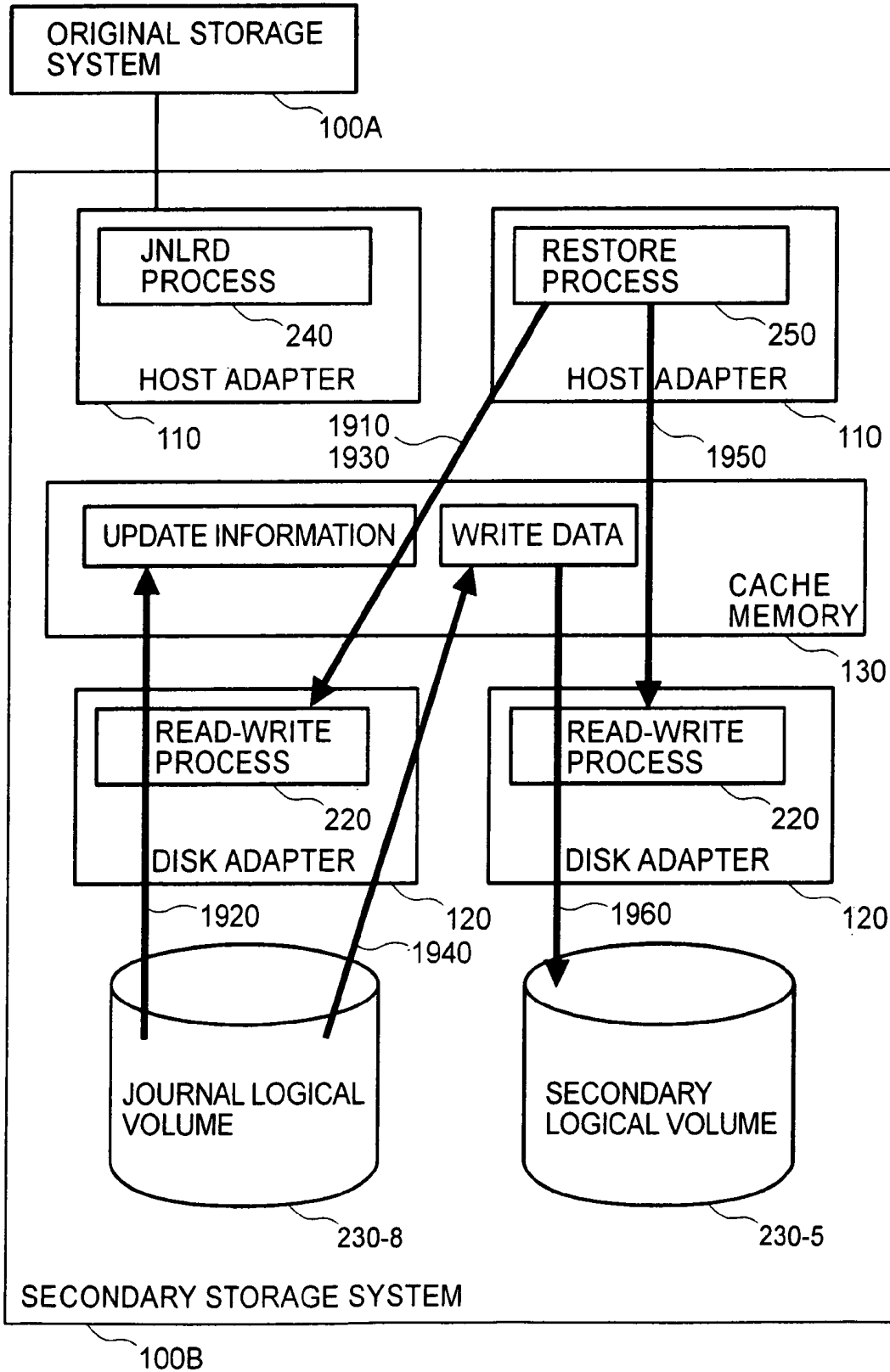


FIG.20

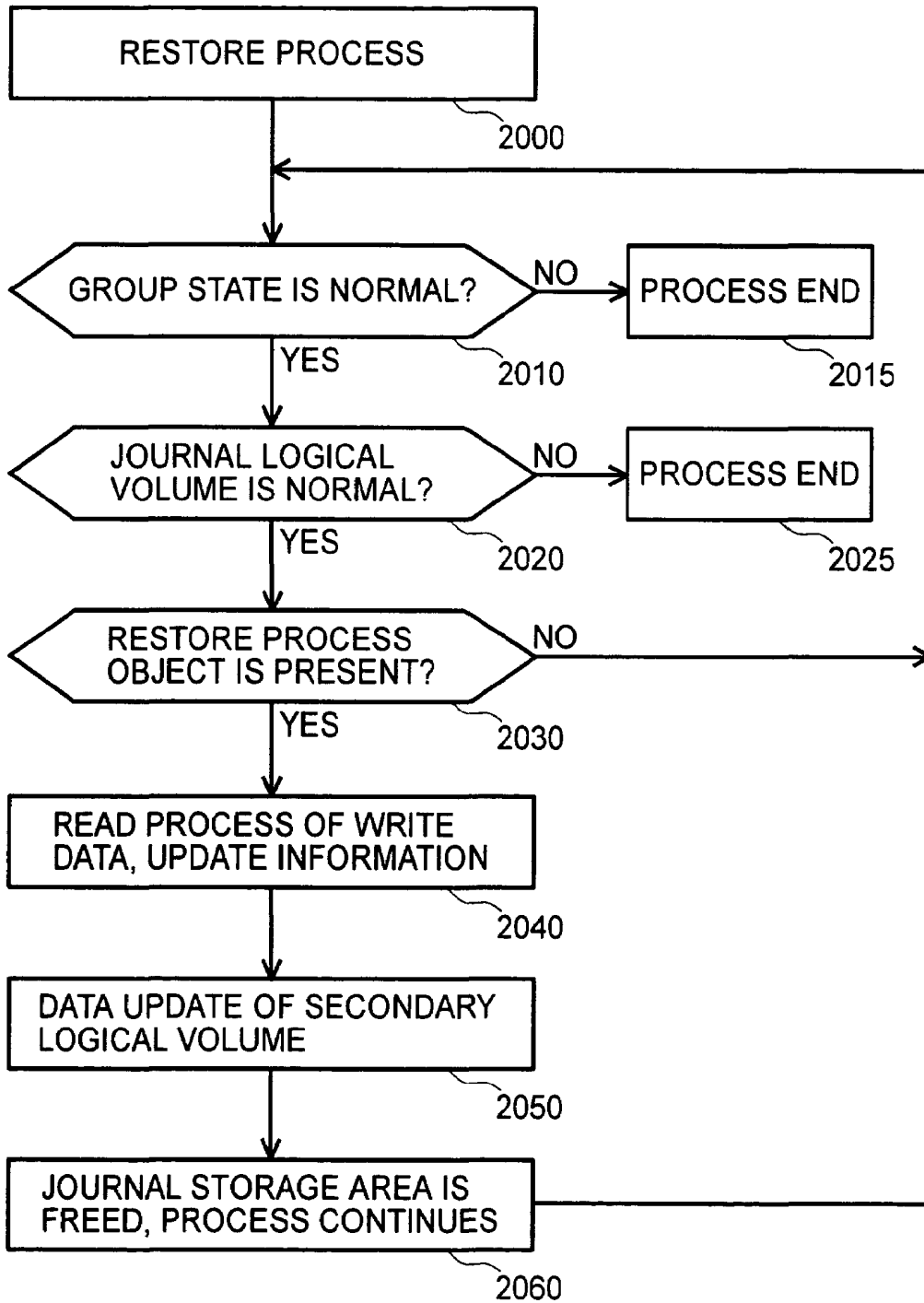


FIG.21

SETTING ITEM	EXAMPLE OF SET VALUE
INSTANT OF TIME AT WHICH WRITE COMMAND WAS RECEIVED	3/17/1999, 22:20:10
GROUP NUMBER	1
UPDATE NUMBER	4
LOGICAL ADDRESS OF WRITE COMMAND	LOGICAL VOLUME NUMBER: 1 POSITION FROM HEAD OF STORAGE AREA OF LOGICAL VOLUME: 700
DATA SIZE OF WRITE DATA	300
LOGICAL ADDRESS OF JOURNAL LOGICAL VOLUME STORING THE WRITE DATA	LOGICAL VOLUME NUMBER: 4 POSITION FROM HEAD OF STORAGE AREA OF LOGICAL VOLUME: 1500

310 UPDATE INFORMATION

FIG.22

SETTING ITEM	EXAMPLE OF SET VALUE
INSTANT OF TIME AT WHICH WRITE COMMAND WAS RECEIVED	3/17/1999, 22:20:10
GROUP NUMBER	1
UPDATE NUMBER	4
LOGICAL ADDRESS OF WRITE COMMAND	LOGICAL VOLUME NUMBER: 1 POSITION FROM HEAD OF STORAGE AREA OF LOGICAL VOLUME: 800
DATA SIZE OF WRITE DATA	100
LOGICAL ADDRESS OF JOURNAL LOGICAL VOLUME STORING THE WRITE DATA	LOGICAL VOLUME NUMBER: 4 POSITION FROM HEAD OF STORAGE AREA OF LOGICAL VOLUME: 2200

FIG.23

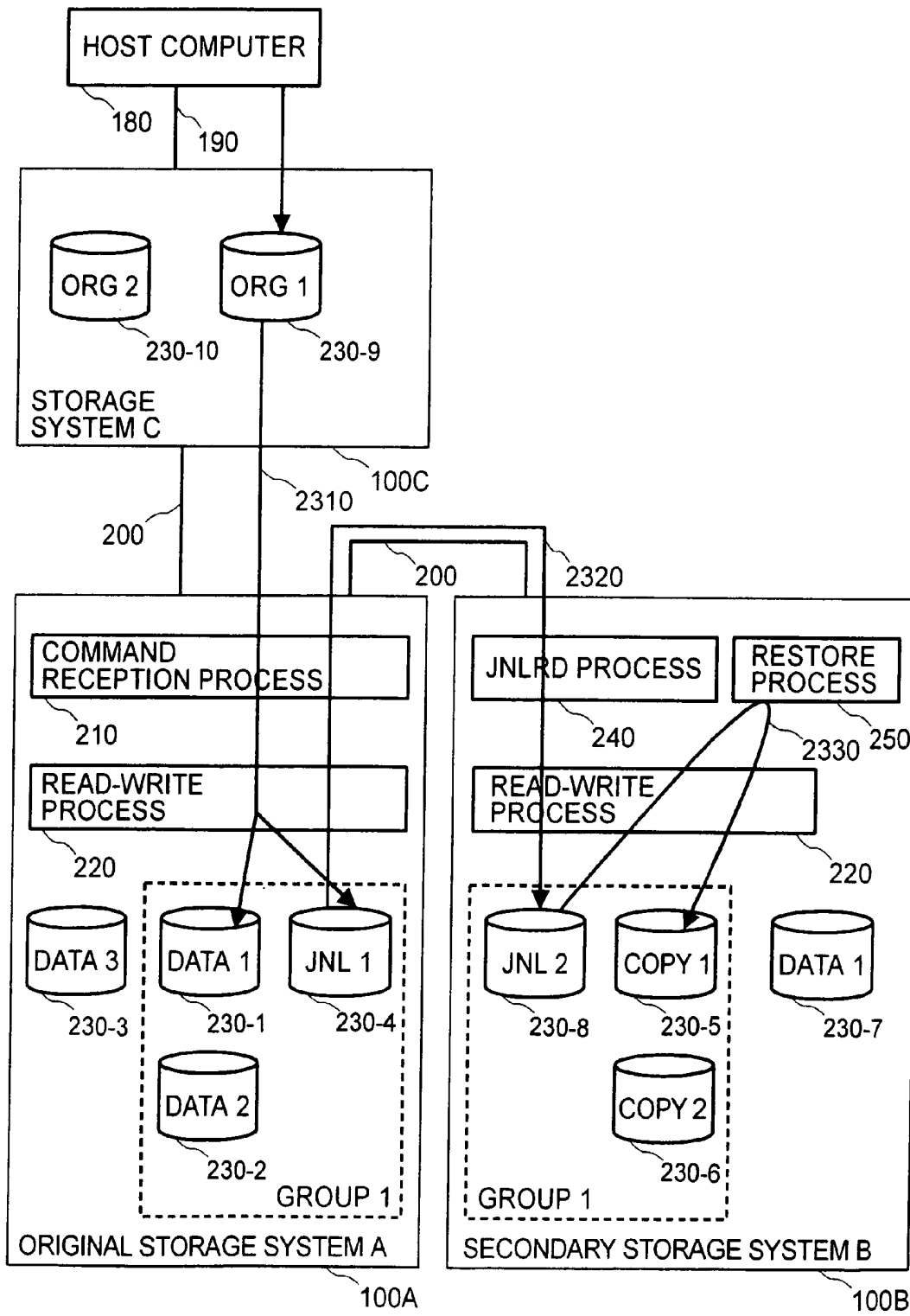
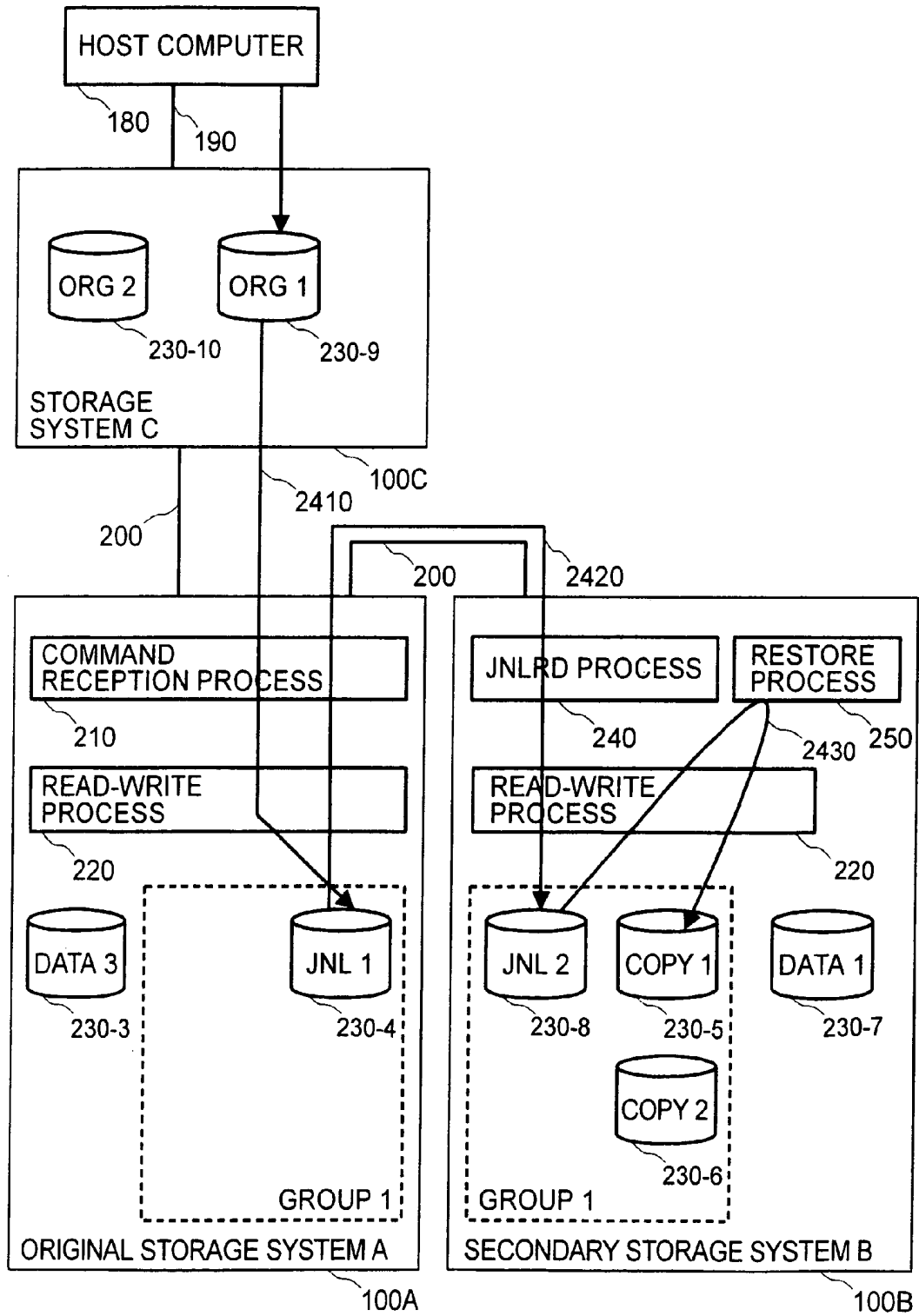


FIG.24



DATA REPLICATION AMONG STORAGE SYSTEMS

CROSS-REFERENCES TO RELATED APPLICATIONS

The present application claims priority to Japanese Patent Application No. 2003 183734, filed on Jun. 27, 2003.

BACKGROUND OF THE INVENTION

The present invention relates to a storage system, and more particularly to data replication among a plurality of storage systems.

A technology relating to data replication among storage systems becomes important for providing uninterrupted service to customers even when failure occurs in a first storage system. The following patent specifications have disclosed a technology for replicating the information stored in a first storage system to a second and third storage system.

U.S. Pat. No. 5,170,480 discloses a technology by which a first computer connected to a first storage system transfers data stored in a first storage system to a second computer via a communication link between a first computer and the second computer, and the second computer transfers the data to a second storage system connected to the second computer.

U.S. Pat. No. 6,209,002 discloses a technology by which a first storage system transfers data stored in a first storage system to a second storage system and the second storage system transfers the data to a third storage system. A computer is connected to the first storage system by a communication link, the first storage system is connected to the second storage system by a communication link, and the second storage system is connected to the third storage system by a communication link. The first storage system holds a first logical volume which is the replication object. The second storage system holds a second logical volume which is a duplicate of the first logical volume and a third logical volume which is a duplicate of the second logical volume. The third storage system holds a fourth logical volume which is a duplicate of the third logical volume. As described in the patent specification, the second storage system executes the process for data replication exclusively from the second logical volume to the third logical volume and the process for data replication from the third logical volume to the fourth logical volume.

With the technology disclosed in U.S. Pat. No. 5,170,480, the first and second computers are used all the time. The first computer conducts the usual operations and the load of the data replication process on the first computer cannot be ignored. Another problem is extending the time for data reference and data update necessary for normal operation. Because the data for replication use a communication link between the first computer and the first storage system, this data transfer collides with the data transfer necessary for normal operation.

With the technology disclosed in U.S. Pat. No. 6,209,002, a storage capacity twice as large as the quantity of the replicated data is required for the second and third storage systems. Furthermore, because a large quantity of the data is the object of replication, a long time is spent on the data replication process and the data of the third storage system becomes obsolete. As a result, a problem arises when the operation is restarted using the data of the third storage system: a long time is required to update the data of the third

storage system and the time to restart the operation is extended. Furthermore, as described in this specification, after the first storage system has performed process of data updating in the first storage system and process of data advancement between the first storage system and the second storage system, the first storage system sends a data update completion report to the host computer. Therefore, a long time is spent on updating data from the computer, and the time spent on updating data increases with the distance between the first storage system and the second storage system. As a result, another problem associated with the technology disclosed in the '002 patent is that the distance between the storage systems cannot be increased significantly.

BRIEF SUMMARY OF THE INVENTION

It is an object of the present invention to transfer or replicate data between a plurality of storage systems, without affecting the host computer of the storage systems and also without affecting communication between the storage systems and the host computer.

Another object of the present invention is to enable the reduction of data storage areas provided in a plurality of storage systems. Yet another object is to transfer or replicate data among a plurality of storage systems effectively, at high speed and in a seamless manner, so that the operation of the host computer of the plurality of storage systems is not affected.

BRIEF DESCRIPTION OF THE DRAWINGS

FIG. 1 is a block diagram illustrating a logical configuration of the first embodiment of the present invention;

FIG. 2 is a block diagram of the storage system of the first embodiment of the present invention;

FIG. 3 illustrates the relationship between the update information and the write data of the first embodiment of the present invention;

FIG. 4 illustrates an example of volume information of the first embodiment of the present invention;

FIG. 5 illustrates an example of pair information of the first embodiment of the present invention;

FIG. 6 illustrates an example of group information of the first embodiment of the present invention;

FIG. 7 illustrates an example of pointer information of the first embodiment of the present invention;

FIG. 8 illustrates a structure of the journal logical volume of the first embodiment of the present invention;

FIG. 9 is a flow chart illustrating a procedure for initiating data replication of the first embodiment of the present invention;

FIG. 10 is a flow chart illustrating an initial copying process of the first embodiment of the present invention;

FIG. 11 illustrates a command reception process of the first embodiment of the present invention;

FIG. 12 is a flow chart of the command reception process of the first embodiment of the present invention;

FIG. 13 is a flow chart of a journal creation process of the first embodiment of the present invention;

FIG. 14 illustrates a journal read reception process of the first embodiment of the present invention;

FIG. 15 is a flow chart of the journal read reception process of the first embodiment of the present invention;

FIG. 16 illustrates a journal read command process of the first embodiment of the present invention;

FIG. 17 is a flow chart of the journal read command process of the first embodiment of the present invention;

FIG. 18 is a flow chart of a journal store process of the first embodiment of the present invention;

FIG. 19 illustrates a restore process of the first embodiment of the present invention;

FIG. 20 is a flow chart of the restore process of the first embodiment of the present invention;

FIG. 21 illustrates an example of update information of the first embodiment of the present invention;

FIG. 22 illustrates an example of update information during the journal creation process of the second embodiment of the present invention; and

FIG. 24 illustrates the third embodiment of the present invention.

DETAILED DESCRIPTION OF THE INVENTION

The embodiments of the data processing system in accordance with the present invention are described below in greater detail with reference to the appended drawings.

FIG. 1 is a block diagram illustrating a logical configuration of the first embodiment of the present invention.

In the configuration of the first embodiment of the present invention, a host computer 180 and a first storage system 100A are connected by a connection path 190, and the storage system 100A is connected to a second storage system 100B holding a duplicate of the data retained in the storage system 100A with a connection path 200. In the explanation below, in order to distinguish between the first storage system 100 holding the data which is the object of replication and the second storage system 100 holding the replicated data, we call the storage system 100 holding the data, which is the object of replication, the original storage system 100A, and the storage system 100 holding the replicated data the secondary storage system 100B. The storage area of the storage system is managed by partitioning and we call the partitioned storage areas logical volumes 230. As shown in FIG. 1, the logical volumes include DATA1 230-1, DATA2 230-2, JNL1 230-3, and DATA3 203-4 in the original storage system A 100A; and COPY1 230-5, COPY2 230-6, JNL2 230-7, and DATA1 230-8 in the secondary storage system B 100B.

The capacity of each logical volume 230 and the physical storage location (physical address) in storage system 100 can be specified using host computer 180 or a maintenance terminal of a computer connected to storage system 100. The physical address of each logical volume 230 is retained in the volume information 400 described below with reference to FIG. 4. The physical address is, for example, a number (storage device number) identifying a storage device 150 (see, FIG. 2) in storage system 100 and a numeric value uniquely indicating a storage area in the storage device, for example, a position from the head of a storage area of the storage device. In the explanation below, the physical address is storage device number and a position from the head of a storage area of the storage device. The logical volume in the explanation below is a storage area of a single storage device, but a single logical volume can be also be associated with storage areas of a plurality of storage devices by converting the logical addresses and physical addresses.

Reference and updating of the data retained by storage system 100 can be uniquely specified by a number identifying the logical volume and a numeric value uniquely indicating the storage area, for example, a position from the

head of the storage area of the logical volume. A set of numbers comprising a logical volume number and a position from the head of the storage area of the logical volume (position in a logical address) are called a logical address.

In the explanation below, in order to distinguish between the data which is the object of replication and the replicated data, a logical volume 230, which is the object of replication, is called an original logical volume, and a logical volume 230, which is the replicated data, is called a secondary logical volume. The set of logical volumes comprising an original volume and a secondary volume is called a pair. The relationship and status of an original logical volume and a secondary logical volume is retained in the pair information 500 described below with reference to FIG. 5.

A management unit referred to as a group is defined. The management unit is configured to protect the update sequence of data between the logical volumes. For example, assume that host computer 180 will update data 1 of original logical volume 1 230-1, then read the data 1 and update data 2 of original logical volume 2 230-2 using a numeric value of data 1. When replicating data from original logical volume 1 230-1 to secondary logical volume 1 230-5 (COPY1) and replicating data from original logical volume 2 230-2 to secondary logical volume 2 230-6 (COPY2) are carried out independently, the process of replicating data 2 to secondary logical volume 2 230-6 (COPY2) is sometimes conducted prior to the process of replicating data 1 to secondary logical volume 1 230-5 (COPY1). When a process of replicating data 1 of volume 230-1 to secondary logical volume 1 230-5 (COPY1) is stopped, e.g., due to an accident, in the process of replicating data 2 of volume 230-2 to secondary logical volume 2 230-6 (COPY2) and replicating data 1 to secondary logical volume 1 230-5 (COPY1), the consistency of the data of secondary logical volume 1 230-5 (COPY1) and secondary logical volume 2 230-6 (COPY2) is lost. In this case, too, in order to maintain the consistency of data of secondary logical volume 1 230-5 (COPY1) and secondary logical volume 2 230-6 (COPY2), a logical volume 230-4 (JNL1), which is required to protect the update sequence of data, is recorded in the same group and replicated in the secondary logical volume in the order of update numbers by allocating the update numbers of group information 600 (described below with reference to FIG. 6) for each data update. For example, as shown in FIG. 1, original logical volume 1 230-1 (DATA1) and original logical volume 2 230-2 (DATA2) of original storage system 100A constitute group 1. Secondary logical volume 1 230-5 (COPY1), which is the duplicate of original logical volume 1 230-1 (DATA1), and secondary logical volume 2 230-6 (COPY2), which is the duplicate of original logical volume 2 230-2 (DATA2), constitute group 1 in the secondary storage system 100B.

When the data of the original logical volume, which is the object of data replication, is updated, the journal described below is created and retained in the logical volume 4 230-4 (JNL1) in original storage system 100A for updating the data of the secondary logical volume. In the explanation of the present embodiment, a logical volume (referred to here as a journal logical volume 230-4), retaining only a journal (JNL), is allocated to each group. In the configuration shown in FIG. 1, a logical volume 4 230-4 (JNL1) is allocated to group 1 of storage system 100A.

A journal logical volume 230-8 (JNL2) is also allocated to group 1 of secondary storage system 100B. The journal logical volume 230-8 is used to retain a journal (JNL2) transferred from original storage system 100A to secondary storage system 100B. Retaining a journal in a journal logical

volume makes it possible not to update data of the secondary logical volume during journal reception, for example, when the load on the secondary storage system 100B is high, and to wait to update the data of the secondary logical volume until the load on the secondary storage system 100B is low. Furthermore, in the case of a plurality of connection lines 200, multiple transfers of the journal from original storage system 100A to secondary storage system 100B can be made and the transfer capacity of the connection lines 200 can be used effectively. It is possible that many journals will remain in secondary storage system 100B due to the update sequence, but writing the journals that cannot be used directly for data update of the secondary logical volume in the journal logical volume makes it possible to free the cache memory. In the configuration shown in FIG. 1, a logical volume 230-8 (JNL2) is allocated to group 1 in the secondary storage system 100B.

A journal is composed of write data and update information. The update information is used to manage the write data and is composed of the time at which a write command was received, a group number, an update number of the group information 600 described below, the logical address of the write command, the data size of the write data, the logical address of the journal logical volume storing the write data, and the like. The update information may hold only one of either the time at which a write command was received or the update number. When the creation time of the write data is present in the write command from host computer 180, the creation time may be used instead of the time at which a write command was received. An example of the journal update information is described below with reference to FIG. 3 and FIG. 21. A write command received at 22 hours, 20 minutes and 10 seconds on Mar. 17, 1999, is stored as update information 310. This write command stores the write data 320 in position 701 from the head of the storage area of logical volume number 1 230-1, the data size being 300. The write data 330 of the journal is stored at position 1500 from the head of the storage area of logical volume number 4 230-4 (journal logical volume JNL1). The logical volume of logical volume number 1 230-1 belongs to group 1. As illustrated in FIG. 21, this journal indicates that is associated with the fourth data update since the data replication initiation of group 1.

The journal logical volume 4 230-4, for example, as shown in FIG. 3, is used by dividing the volume into a storage area containing update information and a storage area containing write data. In the update information area, the information is stored from the head of the update information area in the order of update numbers, and if the end of the update information area is reached, the information is stored from the head of the update information area. In the write data area, the write data is stored from the head of the write data area, and if the end of the write data area is reached, the data is stored from the head of the write data area. The ratio of the update information area and the write data area may be a fixed value or may be set from the maintenance terminal or host computer 180. The aforesaid information is held in the pointer information 701 described below with reference to FIG. 7. The journal logical volume, according to the explanation below, is used by dividing the volume into update information and write data areas, but a system for continuously storing the journal, that is, the update information and write data, from the head of the logical volume may be also used.

The operation for copying the data update of the primary or original logical volume stored in storage system 100A to

the secondary logical volume of storage system 100B is outlined below with reference to FIG. 1.

(1) If the original storage system 100A receives a write command from the host computer 180 relating to data in the original logical volume, the data update in the original logical volume 230-1 (DATA1) and journal retention in the journal logical volume 230-4 (JNL1) are controlled by the command reception process 210 and read-write process 220, as illustrated by the arrow 270 in FIG. 1.

(2) The secondary storage system 100B reads the journal from the original or primary storage system 100A by the journal read process 240 and retains the journal in the journal logical volume (JNL2 230-7) by the read-write process 220 in FIG. 1.

(3) If original storage system 100A receives a command for reading the journal from secondary storage system 100B, the journal is read from journal logical volume 230-4 (JNL1) and transmitted to secondary storage system 100B by the command reception process 210 and read-write process 220, as illustrated by the arrow 280 in FIG. 1.

(4) Secondary storage system 100B reads the journal from journal logical volume (JNL2) in ascending order of update numbers using pointer information 700 and updates the date of secondary logical volume (COPY1) by the restore process 250 read-write process 290 in FIG. 1.

The internal structure of storage system 100 is shown in FIG. 2. Storage system 100 comprises one or more host adapters 110, one or more disk adapters 120, one or more cache memory units 130, one or more shared memory units 140, one or more storage devices 150, one or more common paths 160, and one or more connection lines 170. Host adapters 110, disk adapters 120, cache memory units 130, and shared memory units 140 are connected with each other by common paths 160. Common paths 160 may be duplexed to prevent a failure of a common path 160. Disk adapters 120 and storage devices 150 are connected by connection lines 170. Maintenance terminals configured to perform the setting, monitoring, and maintenance of storage system 100 are connected by special lines to all the host adapters 110 and disk adapters 120 (this connection is not shown in the figure).

Host adapters 110 control data transfer between host computer 180 and cache memory 130. Host adapters 110 are connected to the host computer 180 or to the other storage systems 100 by the respective connection lines 190 and 200. Disk adapters 120 control data transfers between cache memory 130 and storage devices 150. Cache memory 130 is a memory for temporarily storing data received from host computer 180 or data read from storage device 150. Shared memory 140 is a memory shared by all the host adapters 110 and disk adapters 120 in storage system 100.

The volume information 400 manages the logical volume and holds a volume state, a format, a capacity, a pair number, and a physical address. FIG. 4 shows an example of volume information 400. Volume information 400 is retained in a memory referable from host adapter 110 and disk adapter 120, for example, in shared memory 140, for management purposes. Any of "normal", "original", "secondary", "abnormal", and "blank" is held as a volume state. The logical volume 230 with a "normal" or an "original" volume state represents the logical volume which is normally accessible from host computer 180. Access from host computer 180 may also be permitted to the logical volume with a "secondary" volume state. Logical volume 230 with an "original" volume state represents the logical volume for which replication of data is conducted. Logical volume 230 with a "secondary" volume state represents the logical volume that

is used for replication. Logical volume **230** with an “abnormal” volume state represents the logical volume which is normally inaccessible due to failure. The failure is, for example, a breakdown of storage device **150** holding logical volume **230**. Logical volume **230** with a “blank” volume state represents the logical volume that has not been used. The pair number is effective when the volume state is “original” or “secondary” and holds a pair number for specifying pair information **500**. In the example shown in FIG. **4**, logical volume **1** shows that the format is OPEN3, the capacity is 3 GB, and the data has been stored from the head of the storage area of storage device **150** of the storage device number **1**, can be accessed and is the data replication object.

Pair information **500** is the information for managing the pair and contains a pair state, an original storage system number, an original logical volume number, a secondary storage system number, a secondary logical volume number, a group number, and a copy complete address. FIG. **5** shows an example of pair information **500**. Pair information **500** is retained in a memory referable from host adapter **110** and disk adapter **120**, for example, a shared memory **140**. Any of “normal”, “abnormal”, “blank”, “not copying”, and “copying” is retained as a pair state. The “normal” pair state shows that data replication of original logical volume **230** has been carried out normally. The “abnormal” pair state shows that replication of original logical volume **230** was not carried out due to a failure. The failure was, for example, disconnection of connection path **200**. The “blank” pair state shows that the information of the pair number was not effective. The “copying” pair state shows that the initial copy process was undertaken. The “not copying” pair state shows that the initial copy process has not yet been conducted. The original storage system number contains the number specifying original storage system **100A** holding original logical volume **230**. The secondary storage system number contains the number specifying secondary storage system **100B** holding secondary logical volume **230**. In the case of the original storage system, a group number is retained to which the original logical volume belongs, and in the case of the secondary storage system, the group number is retained to which the secondary logical volume belongs. The copy complete address is explained in the description of the initial copy process below. Pair information **1** in FIG. **5** shows that the data replication object is original logical volume **1** of original storage system **1**; the data replication destination is secondary logical volume **1** of secondary storage system **2**; and the data replication process was conducted normally.

Group information **600** contains a group state, a pair set, a journal logical volume number, and an update number. FIG. **6** shows an example of group information **600**. Group information **600** is retained in a memory referable from host adapter **110** and disk adapter **120**, for example, a shared memory **140**. Any of “normal”, “abnormal”, and “blank” is held as a group state. The “normal” group state shows that at least one pair state of a pair set is “normal”. The “abnormal” group state shows that all the pair states of a pair set are “abnormal”. The “blank” group state shows that the information of the aforesaid group number is not effective. In the case of the original storage system, the pair set holds the pair numbers of all the original logical volumes which belong to the group indicated by the group number. In the case of a secondary storage system, the pair numbers of all the secondary logical volumes belonging to the group indicated by the group number are held. The journal logical volume number shows the journal logical volume number belonging to the group with the aforesaid group number. For

the update number, the initial value is 1, and 1 is added if data writing is performed with respect to the original logical volume in the group. The update number is stored in the journal update information and used for protecting the data update order in the secondary storage system **100B**. For example, the group information **1** in FIG. **6** is composed of pair information **1, 2**, original logical volumes **1, 2**, and journal logical volume **4** and shows that data replication is being performed normally

Pointer information **700** is held for each group, to manage the journal logical volume of the group, and contains an update information area head address, a write data area head address, an update information newest address, an update information oldest address, a write data newest address, a write data oldest address, a read initiation address, and a retry initiation address. FIG. **7** and FIG. **8** show examples of pointer information **701**. The update information area head address holds the logical address of the head of the information area storing the update information of the journal logical volume. The write data area head address holds the logical address of the head of the information area storing the write data of the journal logical volume. The update information newest address holds the logical address of the head address of the area in which the next update information will be stored. The update information oldest address holds the logical address of the head retaining the update information of the oldest journal (the update number is small). The write data newest address holds the logical address of the head used for holding the write data when a journal is stored next. The write data oldest address holds the logical address of the head retaining the write data of the oldest journal (the update number is small). The read initiation address and retry initiation address are used only in the original storage system **100A** for the journal read reception process. In the example of pointer information **701** in FIG. **7** and FIG. **8**, the area retaining the journal management information is from the head of the information area of logical volume **4** to position **699**, and the area retaining the write data of the journal is from position **700** to position **2699** in the information area of logical volume **4**. The management information of the journal is retained from position **200** to position **499** in the information area of logical volume **4**, and the management information of the next journal is retained from position **500** in the information area of logical volume **4**. The write data of the journal is retained from position **1300** to position **2199** in the information area of logical volume **4**, and the write data of the next journal is retained from position **2200** in the information area of logical volume **4**.

The explanation below is provided with respect to a mode in which one journal logical volume is allocated to one group, but a plurality of journal logical volumes may also be allocated to one group. For example, two journal logical volumes are allocated to one group; the pointer information **701** is provided for each journal logical volume, and the journals are stored alternately. As a result, writing into storage device **150** of the journal can be dispersed and performance is expected to be improved. In addition, read performance of the journals is also improved. In another example, two journal logical volumes are allocated to one group and usually only one journal logical volume is used. The other journal logical volume is used when the performance of the journal logical volume that has been used is degraded. Performance degradation occurs, for example, when a journal logical volume is composed of a plurality of storage devices **150**, data is held in a RAIDS system, and one of the storage devices **150** has failed.

The above-described volume information **400**, pair information **500**, group information **600**, and pointer information **701** are preferably stored in shared memory **140**. However, the present embodiment is not limited to this case, and the information of those types may be also stored in a centralized or decentralized form in the cache memory **130**, host adapter **110**, disk adapter **120**, and other storage devices **150**.

The procedure for initiating data replication from the original storage system **100A** to the secondary storage system **100B** is described below with reference to FIG. **9** and FIG. **10**.

(1) Explanation of group creation (step **900**). A user refers to group information **600** of original storage system **100A** by using the maintenance terminal or host computer **180** and acquires the group number **A** for which the group state is "blank". The user specifies the group number **A** by using the maintenance terminal or host computer **180** and conducts the group creation specification in original storage system **100A**.

Having received the group creation specification, original storage system **100A** changes the group state with the specified group number **A** to "normal".

Similarly, the user refers to group information **600** of secondary storage system **100B** and acquires the group number **B** for which the group state is "blank". The user specifies secondary storage system **100B** and the group number **B** and conducts the group creation specification in original storage system **100A** using the maintenance terminal or host computer **180**. Original storage system **100A** transfers the received group creation specification to secondary storage system **100B**. Secondary storage system **100B** changes the group state with the specified group number **B** to "normal".

The user may also specify the group number **B** and conduct the group creation specification in secondary storage system **100B** by using the maintenance terminal of secondary storage system **100B** or host computer **180** connected to secondary storage system **100B**.

(2) Explanation of pair recording (step **910**). The user specifies the information indicating the data replication object and the information indicating the data replication address and conducts the pair record specification in original storage system **100A** by using the maintenance terminal or host computer **180**. The information indicating the data replication object is the original logical value number and the group number **A** of the data replication object. The information indicating the data replication address is the secondary storage system **100B** retaining the replicated data, the group number **B**, and the secondary logical volume number.

Having received the above-mentioned pair recording specification, original storage system **100A** acquires the pair number for which the pair information is "blank" from pair information **500** and sets the pair state to "not copying", the original storage system number indicating original storage system **100A** to the original storage system number, the specified original logical volume number to the original logical volume number, the specified secondary storage system number to the secondary storage system number, the specified secondary logical volume number to the secondary logical volume number, and the specified group number **A** to the group number. Original storage system **100A** adds the acquired pair number to the pair set of group information **600** of the specified group number **A** and changes the volume state of the original logical volume number to "original".

Original storage system **100A** specifies the original storage system number indicating original storage system **100A**,

group number **B** specified by the user, the original logical volume number and the secondary logical volume number to secondary storage system **100B**. Secondary storage system **100B** acquires the blank pair number from pair information **500** and sets the pair state to "not copying", the original storage system number indicating original storage system **100A** to the original storage system number, the specified original logical volume number to the original logical volume number, the secondary storage system number indicating the secondary storage system **B** to the secondary storage system number, the specified secondary logical volume number to the secondary logical volume number, and the specified group number **B** to the group number.

Secondary storage system **100B** adds the acquired pair number to the pair set of group information **600** of the specified group number **B** and changes the volume state of the secondary logical volume number to "secondary".

The above-described operation is performed for the pairs of all the data replication objects.

The explanation above was provided with respect to the process in which the recording of logical volumes into a group and setting of logical volume pairs was performed simultaneously, but the volume pairs may be individually recorded.

(3) Explanation of journal logical volume recording (step **920**) is provided with reference to FIG. **9**. The user provides the specification (journal logical volume recording specification) for recording the logical volume used for journal retention in original storage system **100A** using the maintenance terminal or host computer **180**. The journal logical volume recording specification is composed of a group number and a logical volume number.

Original storage system **100A** records the specified logical volume number in the journal logical volume number of group information **600** with the specified group number. The volume state of volume information **400** of this logical volume is set to "normal".

Similarly, the user refers to volume information **400** of secondary storage system **100B**, specifies the logical volume numbers used as secondary storage system **100B**, group number **B**, and the journal logical volume, and performs the journal logical volume recording in original storage system **100A** by using the maintenance terminal or host computer **180**. Original storage system **100A** transfers the journal logical volume recording specification to secondary storage system **100B**. Secondary storage system **100B** records the specified logical volume number in the journal logical volume number of group information **600** of the specified group number **B**. The volume state of volume information **400** of the aforesaid logical volume is set to "normal".

The user may also specify the logical volume number used as the journal logical volume and the group number and provide the journal logical volume recording specification in secondary storage system **100B** using the maintenance terminal of secondary storage system **100B** or the host computer **180** connected to secondary storage system **100B**.

The above-described operations are carried out with respect to all the logical volumes used as the journal logical volumes. The order of steps **910** and **920** can change.

(4) Explanation of data replication process initiation (step **930**) follows. The user specifies the group number for initiating the data replication process and specifies the initiation of the data replication process to original storage system **100A** by using the maintenance terminal or host computer **180**. Original storage system **100A** sets to **0** all the copy complete addresses of pair information **400** belonging to the specified group.

Original storage system 100A specifies the initiation of the journal read process and the restore process to the secondary storage system 100B.

Original storage system 100A initiates the initial copying process.

(5) Explanation of initial copying process end (step 940).

If the initial copying process ends, original storage system 100A posts the end of the initial copying process to secondary storage system 100B. Secondary storage system 100B changes the pair states of all the secondary logical volumes belonging to the specified group to "normal".

FIG. 10 is a flowchart of the initial copying process. In the initial copying process, the copy complete address of pair information 500 is used with respect to the entire storage area of the original logical volume of the data replication object and a journal is created for each unit size in the order starting from the head of the storage area. The initial value of the copy complete address is 0, and the created data quantity is added up for each journal creation. A journal creation is completed in the initial copying process from the head of the storage area of the logical volume to the address which is one prior to the copy complete address. Conducting the initial copying process makes it possible to transfer the data of the original logical volume that has not been updated into the secondary logical volume. In the explanation below, processing conducted by one of host adapters 110 in original storage system 100A is described, but processing may also be conducted by one of disk adapters 120.

(1) Host adapter 110 of original storage system 100A obtains original logical volume 230-1 for which the pair state is "not copying" in the pair belonging to the group that is the object of processing, changes the pair state to "copying", and repeats the process (steps 1010, 1020). When no original logical volume 230-1 is present, the process ends (step 1030).

(2) In step 1020, when logical volume 230-1 is present, the host adapter 110 creates a journal with the unit size (for example, 1 MB) data. The journal creation process is described below (step 1040).

(3) The host adapter 110 adds the data size of the created journal to the copy complete address (step 1050).

(4) The above-described processing is repeated until the copy complete address reaches the capacity of original logical volume 230-1 (step 1060). When the copy complete address becomes equal to the capacity of original logical volume 230-1, the journal is created with respect to the entire storage area of original logical volume 230-1. Thus, the pair state is updated to "normal" and processing of the other original logical volumes is initiated (step 1070).

In the above-described flow chart, the explanation was conducted with respect to processing logical volumes one by one. However, a plurality of logical volumes may be processed simultaneously.

FIG. 11 illustrates the command reception process 210; FIG. 12 is a flow chart of the command reception process 210, and FIG. 13 is a flowchart of the journal creation process. The operation relating to a case in which original storage system 100A receives a write command for logical volume 230 of the data replication object from host computer 180 is explained below with reference to these figures.

(1) The host adapter 110 in original storage system 100A receives an access command from the host computer. The access command includes commands such as read, write, and journal read, the logical address which is the object of the command, the quantity of data, and the like. In this example, the logical address in the access command is denoted by the logical address "A"; the logical volume

number is denoted by logical volume number of volume 230-1; the location in the logical volume is denoted by a location "A" in the logical volume 230-1; and the quantity of data is denoted by data quantity "A" of the volume 230-1 (step 1200 of FIG. 12).

(2) Host adapter 110 examines the access command (steps 1210, 1215 of FIG. 12). When the access command is a journal read command in step 1215 of FIG. 12, the journal read reception process is implemented (step 1220 of FIG. 12). When the access command is other than the journal read command and write command, for example, when the access command is a read command, a read process is implemented in accordance with conventional technology (step 1230 of FIG. 12).

(3) When the access command is a write command in step 1210 of FIG. 12, volume information 400 of logical volume 230-1 is referred to and the volume state is examined (step 1240 of FIG. 12). When the volume state of logical volume 230-1 is other than "normal" or "original" in step 1240, access to logical volume 230-1 is impossible. As a result, an abnormal end is reported to host computer 180 (step 1245 in FIG. 12).

(4) When the volume state of logical volume 230-1 is either "normal" or "original" in step 1240, host adapter 110 reserves cache memory 130 and notifies host computer 180 that the preparation for data reception has been made. Host computer 180 receives this notification and transmits the write data to original storage system 100A. Host adapter 110 receives the write data and retains it in cache memory 130 (steps 1250, 1100 in FIG. 11).

(5) Host adapter 110 refers to the volume state of logical volume 230-1 and determines whether logical volume 230-1 is the data replication object (step 1260 of FIG. 12). When the volume state is "original" in step 1260, logical volume 230-1 is the data replication object. Accordingly, the journal creation process is conducted (step 1265 of FIG. 12).

(6) When the volume state is "normal" in step 1240, or after completing the journal creation process of step 1265, host adapter 110 instructs disk adapter 120 to write the write data into storage device 150 (1140 in FIG. 11) and reports the process end to host computer 180 (steps 1270, 1280 of FIG. 12). Thus disk adapter 120 retains the write data in storage device 150 by read-write process (1110 in FIG. 11).

The journal creation process is explained below.

(1) Host adapter 110 examines the volume state of the journal logical volume 230-4 (step 1310 in FIG. 13). When the volume state of the journal logical volume 230-4 is "abnormal" in step 1310, storing a journal in the journal logical volume 230-4 is impossible. Accordingly, the group state is changed to "abnormal" and the process ends (step 1315 in FIG. 13). In this case, the journal logical volume 230-4 is changed to the normal logical volume.

(2) When the journal logical volume 230-4 is determined to be "normal" in step 1310, the journal creation process continues. The journal creation process differs depending on whether it is conducted within the initial copying process or within the command reception process (step 1320 in FIG. 13). When the journal creation process is executed within the command reception process, the process is conducted from step 1330 in FIG. 13. When the journal creation process is executed within the initial copying process, the process is conducted from step 1370 in FIG. 13.

(3) When the journal creation process is conducted within the command reception process, host adapter 110 determines whether the logical address "A" of the write object has become the processing object of the initial copying process (step 1330). When the pair state of logical volume 230-1 is

“not copying”, the journal creation process is executed thereafter in the initial copying process. As a result, the process ends without creating a journal (step 1335 in FIG. 13). When the pair state of logical volume 230-1 is “copying,” if the copy complete address is equal to or less than position “A” in the logical address, the journal creation process is carried out thereafter in the initial copying process. Accordingly, the process ends without creating a journal (step 1335). In other cases, that is, when the pair state of logical volume 230-1 is “copying” and the copy complete address is no less than position “A” in the logical address, or when the pair state of logical volume 230-1 is “normal,” the initial copying process has already been completed. Therefore, the journal creation process continues.

(4) Host adapter 110 then determines whether the journal can be stored in the journal logical volume. The presence or absence of a blank area in the update information area is ascertained using pointer information 701 (step 1340 in FIG. 13). When the update information newest address and the update information oldest address of pointer information 701 are equal to each other, no blank area exists in the update information area. For this reason, the process ends as a journal creation failure (step 1390 in FIG. 13).

When a blank area is present in the update information area in step 1340, pointer information 701 is used to determine whether the write data can be stored in the write data area (step 1345 in FIG. 13). When the sum of the write data newest address and a quantity “A” of the data is equal to or larger than the write data oldest address, storage is not possible in the write data area. For this reason, the process ends as a journal creation failure (step 1390).

(5) When the journal can be stored, host adapter 110 acquires the logical address storing the update number and update information and the logical address storing the write data, and creates the update information in cache memory 130. The update number, a numeric value acquired from group information 600 of the object group and having 1 added thereto, is set to the update number of group information 600. The logical address storing the update information is the update information newest address of pointer information 701, and the numeric value having the size of the update information added thereto is set to the update information newest address of pointer information 701. The logical address storing the write data is the write data newest address of pointer information 701, and the numeric value obtained by adding the quantity “A” of the data to the write data newest address is set to the write data newest address of pointer information 701.

Host adapter 110 sets the above-described numeric values, group number, the time at which the write command was received, the logical address “A” in the write command, and quantity “A” of the data, to the update information (step 1350 in FIG. 13; 1120 in FIG. 11). For example, when a write command of data with a size of 100 has been received in position 800 from the head of the storage area of the original logical volume 1 230-1 of group 1 in a state of group information 600 shown in FIG. 6 and pointer information 701 shown in FIG. 7, the update information shown in FIG. 22 is created. The update number of the group information becomes 5, the update information newest address of the pointer information becomes 600 (the size of the update information is 100), and the write data newest address becomes 2300.

(6) Host adapter 110 instructs disk adapter 120 to write the update information and the write data into storage device 150 and normally ends processing (step 1360 in FIG. 13; 1130, 1140, 1150 in FIG. 11).

(7) When the journal creation process is within the initial copying process, the process of step 1370 in FIG. 13 is conducted. Host adapter 110 determines whether the journal can be created. The presence or absence of a blank area of update information is examined using pointer information 701 (step 1370). When the update information newest address and the update information oldest address of pointer information 701 are equal to each other, no blank area is present in the update information area. For this reason, the process ends as a journal creation failure (step 1390). In the case of the initial copying process shown in the present embodiment, the write data of the journal is read from the original logical volume, and because the write data area is not used, confirms the blank area of the write data area is not necessary.

(8) When creation of the journal is ascertained as possible at step 1370, host adapter 110 acquires the numeric value that will be set in the update information and creates the update information in cache memory 130. The update number, a numeric value acquired from the group information 600 of the object group and having 1 added thereto is set to the update number of the group information 600. The logical address storing the update information is the position of the update information newest address of pointer information 701, and the numeric value having the size of the update information added thereto is set to the update information newest address of pointer information 701.

Host adapter 110 sets the above-described acquired numeric values, the group number, the initiation time for this process, the logical address of the initial copying process object, a processing quantity of one initial copy, and the logical address of the initial copying process object to the logical address of the journal logical volume storing the write data (step 1380 in FIG. 13; 1120 in FIG. 11).

(9) Host adapter 110 instructs disk adapter 120 to write the update information into storage device 150 and normally ends the process (step 1385 in FIG. 13; 1140, 1160 in FIG. 11).

In the explanation above, a case was described in which the update information was present in cache memory 130, but the update information also may be stored in shared memory 140.

Writing the write data into storage device 150 may be conducted asynchronously, that is, not directly after steps 1360 and 1385. However, if host computer 180 again issues a write command to logical address “A”, the write data of the journal is overwritten. Therefore, the write data of the journal has to be written into a storage device 150 corresponding to the logical address of the journal logical volume of update information before write data from host computer 180 is received. Alternatively, writing into a storage device 150 corresponding to the logical address of the journal logical volume of update information may be conducted after the write data is moved in another cache memory.

In the above-described journal creation process, the journal was assumed to be retained in storage device 150, but it is also possible to prepare a constant-capacity cache memory 130 for the journal in advance and to retain the journal in storage device 150 after this cache memory has been entirely used. The cache memory capacity for the journal is specified, for example, from the maintenance terminal.

Read-write process 220 is implemented by disk adapter 120 upon reception of a command from host adapter 110 or disk adapter 120. The process to be implemented includes a process of writing the data of the specified cache memory 130 into a storage area in storage device 150 corresponding to the specified logical address and a process of writing the

data into the specified cache memory 130 from the storage area in storage device 150 corresponding to the specified logical address.

FIG. 14 explains the operation (journal read reception process) of host adapter 110 of original storage system 100A that has received a journal read command. FIG. 15 is a flow chart of this operation. An operation relating to a case in which original storage system 100A has received a journal read command from secondary storage system 100B is explained below with reference to these figures.

(1) Host adapter 110 in original storage system 100A receives an access command from secondary storage system 100B. The access command comprises an identifier indicating that this is a journal read command, a group number of the command object, and the presence or absence of retry specification. The group number in the access command is denoted below as group number "A" (step 1220 in FIG. 15; 1410 in FIG. 14).

(2) Host adapter 110 determines whether the group state with group number "A" is "normal" (step 1510). When the group state is found to be other than "normal", for example, a "failure" in the examination conducted in step 1510, the group state is posted to secondary storage system 100B and the process ends. Secondary storage system 100B conducts the process according to the received group state. For example, when the group state is "failure," the journal read process ends (step 1515).

(3) When the group state of group number "A" is "normal" at step 1510, host adapter 110 examines the volume state of the journal logical volume 230-4 (step 1520). When the volume state of the journal logical volume is found to be, for example, "failure", rather than "normal", in the examination conducted at step 1520, the group state is changed to "failure;" the group state is posted to secondary storage system 100B, and the process ends. Secondary storage system 100B conducts processing according to the received group state. For example, when the group state is "failure," the journal read process ends (step 1525),

(4) When the volume state of the journal logical volume is "normal" at step 1520, a determination is made whether the journal read command is a retry specification (step 1530).

(5) When the journal read command is found to be a retry at step 1530, host adapter 110 again transmits the previously transmitted journal to secondary storage system 100B. Host adapter 110 reserves cache memory 130 and instructs the disk adapter to read the information on the size of the update information from the retry initiation address of pointer information 701 to the cache memory (1420 in FIG. 14).

In the read-write process of the disk adapter, the update information is read from storage device 150 and retained in cache memory 130, and host adapter 110 is notified to this effect (1430 in FIG. 14).

Host adapter 110 receives the notification of the read end of update information, acquires the logical address of write data and the size of the write data from the update information, reserves cache memory 130, and instructs the disk adapter to read the write data in the cache memory (step 1540 in FIG. 15; 1440 in FIG. 14).

In the read-write process of the disk adapter, the write data is read from storage device 150 and retained in cache memory 130, and host adapter 110 is notified to this effect (1450 in FIG. 14).

Host adapter 110 receives notification of the read end of write data, transmits the update information and write data

to secondary storage system 100B, frees cache memory 130 holding the journal, and ends the process (step 1545 in FIG. 15; 1460 in FIG. 14).

(6) When the journal read command is found not to be a retry specification in the examination conducted at step 1530, host adapter 110 examines the presence of a journal that has not been transmitted. If such a journal is present, it is transmitted to secondary storage system 100B. Host adapter 110 compares the read initiation address of pointer information 701 with the update information newest address (step 1550).

When the read initiation address is equal to the update information newest address, the transmission of the entire journal to secondary storage system 100B is complete. Therefore, "no journal" is transmitted to secondary storage system 100B (step 1560) and the storage area of the journal that was transmitted to the secondary storage system 100B during the previous journal read command is freed (step 1590).

The process for freeing the journal storage area sets the retry initiation address to the update information oldest address of pointer information 701. When the update information oldest address becomes the write data area head address, the update information oldest address is set at "0." The write data oldest address of pointer information 701 changes to a numeric value obtained by adding the size of the write data transmitted according to the previous read journal command. When the write data oldest address becomes the logical address above the capacity of the journal logical volume 230-4, the write data area head address is decreased and corrected.

(7) When the presence of a non-transmitted journal is found in the examination conducted in step 1550, host adapter 110 reserves cache memory 130 and instructs the disk adapter to read the information on the size of update information from the read initiation address of pointer information 701 to the cache memory (1420 in FIG. 14).

In the read-write process of disk adapter 110, the update information is read from storage device 150 and retained in cache memory 130, and the host adapter is notified to this effect (1430 in FIG. 14).

The host adapter 110 receives the notification of the read end of update information, acquires the logical address of the write data and the size of the write data from the update information, reserves the cache memory 130, and instructs the disk adapter 110 to read the write data in the cache memory (step 1570; 1440 in FIG. 14).

In the read-write process of disk adapter 110, the write data is read from the storage device 150 and retained in the cache memory 130, and the host adapter is notified to this effect (1450 in FIG. 14).

Host adapter 110 receives notification of the read end of the write data, transmits the update information and the write data to the secondary storage system 100B (step 1580) and frees cache memory 130 holding the journal (1460 in FIG. 14). Then, it sets the read initiation address to the retry initiation address of pointer information 701 and sets a numerical value obtained by adding the update information size of the transmitted journal to the read initiation address.

(8) Host adapter 110 frees the storage area of the journal that was transmitted to secondary storage system 100B during the previous journal read command (step 1590).

In the above-described journal read reception process, original storage system 100A transmitted journals one by one to secondary storage system 100B. However, a plurality of journals may simultaneously be transmitted to 1 secondary storage system 100B. The number of journals transmit-

ted in response to one journal read command may be specified in the journal read command by secondary storage system 100B and may be specified in original storage system 100A or secondary storage system 100B by the user, e.g., during the group creation. Furthermore, the number of journals transmitted in response to one journal read command may be changed dynamically according to the transfer capacity, load, and the like, of connection path 200 of original storage system 100A and secondary storage system 100B. Further, the journal transfer quantity may also be specified by considering the size of the write data of journals, rather than the number of journals.

In the above-described journal read reception process, the journals were written into cache memory 130 from storage device 150, but if the journals are present in cache memory 130, this process is unnecessary.

The above-described process for freeing the storage area of the journal in the journal read reception process was conducted during subsequent journal read command processing, but the freeing of storage area may be also conducted immediately after the journal has been transmitted to secondary storage system 100B. Further, secondary storage system 100B may set the update number whose storage area can be freed in the journal read command, and original storage system 100A may free the journal storage area according to this specification.

FIG. 16 explains journal read command process 240. FIG. 17 is a flow chart of this process. FIG. 18 is a flow chart of a journal store process. The operation in which host adapter 110 of secondary storage system 100B reads the journals from original storage system 100A and stores them in a journal logical volume 230-8 is described below with reference to these figures.

(1) Host adapter 110 in secondary storage system 100B reserves cache memory 130 storing the journal and transmits to original storage system 100A an access command comprising an identifier indicating that this is a journal read command, a group number of the command object in original storage system 100A, and the presence or absence of a retry specification. The group number in the access command is denoted below as a group number "A" (step 1700; 1610 in FIG. 16).

(2) Host adapter 110 receives the journal and the response of original storage system 100A (1620 in FIG. 16). Host adapter 110 examines the response and, when the response from original storage system 100A is "no journal," transmits a read journal command to original storage system 100A after a certain interval, because the journal of the specified group is not present in original storage system 100A (steps 1720, 1725).

(4) When the response of original storage system 100A is "group state is failure" or "group state is blank," the group state of secondary storage system 100B is changed to the received state, and the journal read process ends (steps 1730, 1735).

(5) When the response of original storage system 100A is normal, that is, other than the above-described responses, the volume state of journal logical volume 230-8 is examined (step 1740). When the volume state of journal logical volume 230-8 is "abnormal", the journal cannot be stored in the journal logical volume 230-8. Therefore, the group state is changed to "abnormal" and the process ends (step 1745). In this case, the group state is returned to normal by changing the journal logical volume 230-8 to the normal logical volume.

(6) When the volume state of the journal logical volume 230-8 is normal in the examination conducted at step 1740,

journal store process 1800 is conducted. When the journal store process 1800 ends normally, the next journal read command is transmitted. Alternatively the next journal read command is transmitted after a certain interval (step 1760 in FIG. 17). As for the timing for transmitting the next journal command, transmission may be conducted periodically at constant intervals or the timing may be determined by the number of journals, the traffic on connection line 200, the storage capacity of the journal held by secondary storage system 100B, the load on secondary storage system 100B, and the like. Furthermore, the information capacity of the journal held by original storage system 100A or the pointer information of original storage system 100A may be read from secondary storage system 100B and the timing may be determined by the numeric value thereof. Transfer of this information may be conducted by a special command and may be included in the response of the journal read command. In considering the timing for transmitting the next journal command and changing a term for transmitting the next journal command, if the information capacity of the journal held by the original storage system 100A or the information capacity of the journal held by the secondary storage system 100B has greater quantity, the data processing system can change the information capacity of the journal for the storage system 100A or 100B. The subsequent process is identical to that following step 1710.

(7) When the journal storage process of step 1800 does not end normally, the blank area of the journal logical volume 230-8 is not presented. For this reason, the received journal is canceled and a journal read command with a retry specification is transmitted after a certain interval (step 1755 in FIG. 17). Alternatively, the journal is held in the cache memory and the journal store process is conducted again after a certain interval. This is because conducting restore process 250 (described below) makes it possible to add the blank area to the journal logical volume after a certain interval. With such a method, the presence of a retry specification in the journal read command is unnecessary.

Journal store process 1800 illustrated in FIG. 18 is explained below.

(1) Host adapter 110 determines whether the journal can be stored in the journal logical volume 230-8. The presence of a blank area in the update information area is examined using pointer information 701 (step 1810). When the update information newest address and the update information oldest address of pointer information 701 are equal to each other, no blank area is present in the update information area. For this reason, the process ends as a journal creation failure (step 1820).

(2) When a blank area is present in the update information area in step 1810, an examination is conducted about whether the write data can be stored in the write data area by use of pointer information 701 (step 1830). When the sum of the write data newest address and the quantity of write data of the received journal is equal to or larger than the write data oldest address, the write data cannot be stored in the write data area. For this reason, the process ends as a journal creation failure (step 1820).

(3) When the journal can be stored, host adapter 110 changes the group number and the logical address of the journal logical volume 230-8 in the received update information. The group number is changed to the group number "B" of secondary storage system 100B, and the logical address of the journal logical volume is changed to the write data newest address of pointer information 701. Host adapter 110 changes the update information newest address of pointer information 701 to a numeric value obtained by

adding the size of update information to the update information newest address. Host adapter 110 changes the write data newest address of pointer information 701 to a numeric value obtained by adding the size of write data to the write data newest address (step 1840).

(4) Host adapter 110 instructs disk adapter 120 to write the update information and the write data in storage device 150 and ends the process as a journal creation success (step 1850 in FIG. 18; 1630 in FIG. 16). Disk adapter 120 then writes the update information and the write data into storage device 150 by the read-write process and frees cache memory 130 (1640 in FIG. 16).

In the above-described journal store process, the journal was assumed to be retained in storage device 150, but it is also possible to prepare a constant-capacity cache memory 130 for the journal in advance and to retain the journal in storage device 150 after the entire cache memory has been used. The cache memory capacity for the journal is specified, for example, from the maintenance terminal.

FIG. 19 explains restore process 250. FIG. 20 is a flow chart of this process. The operation in which host adapter 110 of secondary storage system 100B uses the journal and conducts data update is described below with reference to these figures. Restore process 250 may be also conducted by disk adapter 120 of secondary storage system 100B.

(1) Host adapter 100 determines whether the group state of group number "B" is "normal" (step 2010). When the group state is found to be other than "normal", for example, "failure," at step 2010, the restore process ends (step 2015).

(2) When the group state is found to be "normal" at step 2010, the volume state of the journal logical volume 230-8 is examined (step 2020). When the volume state of journal logical volume 230-8 is found to be "abnormal" at step 2020, access is impossible. As a result, the group state is changed to "abnormal" and the process ends (step 2025).

(3) When the volume state of journal logical volume 230-8 is found to be "normal" at step 2020, examination is made to of whether the journal of restore object is present. Host adapter 110 acquires the update information oldest address and the update information newest address of pointer information 701. When the update information oldest address and the update information newest address are equal to each other, no journal is present. Accordingly, the restore process is temporarily stopped and resumed after a certain interval (step 2030).

(4) When the journal of restore object is present at step 2030, the following process is conducted with respect to the journal having the oldest (minimum) update number. The update information of that journal is retained from the update information oldest address of pointer information 701. Host adapter 110 reserves cache memory 130 and instructs the disk adapter to read the information on the size of the update information in cache memory 130 (1910 in FIG. 19).

In the read-write process of the disk adapter, the update information is read from storage device 150 and retained in cache memory 130, and host adapter 110 is notified to this effect (1920 in FIG. 19).

Host adapter 110 receives the notification of the read end of the update information, acquires the logical address of the write data and the size of the write data from the update information, reserves cache memory 130, and instructs the disk adapter to read the write data in cache memory (1930 in FIG. 19).

In the read-write process of the disk adapter, the write data is read from storage device 150 and retained in cache

memory 130, and the host adapter is notified to this effect (step 2040 of FIG. 20; 1940 in FIG. 19).

(5) Host adapter 110 finds the logical address of the secondary logical volume that will be obtained from the update information and instructs the disk adapter to write the write data into the secondary logical volume 230-5 (step 2050 in FIG. 20; 1950 in FIG. 19). In the read-write process of the disk adapter, the data is written into storage device 150 corresponding to the logical address of the secondary logical volume 230-5; cache memory 130 is freed, and the host adapter is notified to this effect (1960 in FIG. 19).

(6) Host adapter 110 receives the notification of the write process end of the disk adapter and frees the journal storage area. The process for freeing the journal storage area changes the update information oldest address of the pointer information 701 to a numeric value obtained by adding the size of update information. When the update information oldest address becomes the write data area head address, the update information oldest address is set "0". The write data oldest address of pointer information 701 changes to a numeric value obtained by adding the size of the write data. When the write data oldest address becomes the logical address above the capacity of the journal logical volume, the write data area head address is decreased and corrected. Host adapter 110 thereafter initiates the next restore process (step 2060 in FIG. 20).

In the above-described restore process 250, the journal was read from storage device 150 into cache memory 130, but when it is present in cache memory 130, this process is unnecessary.

In the above-described journal read reception process and journal read command process 240, a journal to be transmitted by original storage system 100A was determined by pointer information 701, but secondary storage system 100B may also determine a journal to be transmitted. For example, an update number is added to the journal read command. In this case, a retrieval method or a table for finding the logical address where the update information has been stored from the update number is provided in shared memory 140 of original storage system 100A in order to find the logical address of update information with the update number specified by secondary storage system 100B in the journal read reception process.

In the above-described journal read reception process and journal read command process 240, a journal read command was used, but the usual read command may be also used. For example, the group information 600 and pointer information 701 of original storage system 100A are transferred in advance into secondary storage system 100B, and secondary storage system 100B reads the data (that is, the journal) of the journal logical volume 230-4 of original storage system 100A.

In the above-described journal read reception process, the explanation was conducted with respect to the case in which the journals were transmitted from original storage system 100A to secondary storage system 100B in the order of update numbers. However, they may be also transmitted not in the order of update numbers. Furthermore, a plurality of journal read commands may be transmitted from original storage system 100A to secondary storage system 100B. In this case, a retrieval method or a table for finding the logical address where the update information has been stored from the update number is provided in secondary storage system 100B in order to process the journals in the order of update numbers in the restore process.

In the above-described data processing system in accordance with the present invention, the original storage system

acquires the journals and the secondary storage system replicates the data. As a result, the host computer connected to the original storage system carries no load relating to data replication. Furthermore, communication lines of the original storage system and the host computer connected to the original storage system are not used because the journals are transferred between the original storage system and the secondary storage system.

FIG. 23 shows a logical configuration of the second embodiment.

In this configuration, host computer 180 and storage system 100C are connected by connection path 190; storage system 100C and original storage system 100A are connected by connection path 200, and original storage system 100A and secondary storage system 100B are connected by connection path 200. Storage system 100C includes logical volumes 230-9 (ORG1) and 230-10 (ORG2), and conducts the data update of logical volume 230-9 (ORG1) and the data update of logical volume 230-1 (DATA1) in original storage system 100A during the data update into the logical volume 230-9 (ORG1) of storage system 100C.

Original storage system, 100A, as was described in the first embodiment, conducts the retention of journals in journal logical volume 230-4 (JNL1) using command reception process 210 and read-write process 220 during the data update into the original logical volume 230-1 (DATA1) (2310 in FIG. 23).

Secondary storage system 100B reads the journal from original storage system 100A using journal read process 240 described above, and retains the journal in the journal logical volume 230-8 (JNL2) using read-write process 220 (2320 in FIG. 23).

If original storage system 100A receives a command to read a journal from secondary storage system 100B, it reads the journal from the journal logical volume 230-4 (JNL1) using command reception process 210 and read-write process 220 and transmits the journal to secondary storage system 100B (2320).

Secondary storage system 100B reads the journal from the journal logical volume 230-8 (JNL2) according to the update number using restore process 250 and read-write process 220 (both described above) and updates the data of the secondary logical volume 230-5 (COPY1), which is the duplicate of the original logical volume 230-1 (DATA1) (2330). Consistency of data between the logical volumes can thus be maintained by updating the data in the order of update numbers.

In the above-described data processing system in accordance with the present invention, the original storage system acquires a journal and stores it in a storage area specially designed for journals. Furthermore, the secondary storage system stores the journal received from the original storage system in a storage area specially designed for journals. The storage area specially designed for journals can be smaller than the storage area of the data replication object, and replication of data of the original storage system into the secondary storage system can be conducted with a smaller storage capacity.

FIG. 24 shows a logical configuration of the third embodiment.

In this configuration, host computer 180 and storage system 100C are connected by connection path 190; storage system 100C and original storage system 100A are connected by connection path 200, and original storage system 100A and secondary storage system 100B are connected by connection path 200. Storage system 100C conducts data update of a logical volume 230-9 (ORG1) and data update

of a logical volume (DATA1) in original storage system 100A during the data update into the logical volume (ORG1) of storage system 100C, as described with reference to the conventional technology.

Although original storage system 100A is indicated as having the original logical volume (DATA1) to storage system 100C, original storage system does not allocate actual storage areas, that is, storage devices 150. That is, no physical storage areas corresponding to the volume (DATA1) exists in the storage system 10A. For example, it sets numerical values indicating that storage devices 150 have not been allocated to the physical addresses of volume information 400. During the reception of the write command to the data of the original logical volume (DATA1) from storage system 100C, the original storage system 100A does not conduct process step 1270 of command reception process 210 (described above) and conducts only the retention of journal in the journal logical volume 230-4 (JNL1) (2410 in FIG. 24).

Secondary storage system 100B reads a journal from original storage system 100A using journal read process 240 as described above, and retains the journal in the journal logical volume 230-8 (JNL2) using read-write process 220 (2420 in FIG. 24).

If original storage system 100A receives a command to read a journal from secondary storage system 100B, it reads the journal from the journal logical volume 230-4 (JNL1) using command reception process 210 and read-write process 220 and transmits the journal to secondary storage system 100B (2420).

Secondary storage system 100B reads the journal from the journal logical volume 230-8 (JNL2) according to the update number using restore process 250 described above and read write process 220 and updates the data of the secondary logical volume 230-5 (COPY1), which is the duplicate of the logical volume (ORG1) (2430). The consistency of data between the logical volumes can thus be maintained by updating the data in the order of update numbers.

In the above-described data processing system in accordance with the present invention, when a failure occurs in storage system 100C or host computer 180 connected to storage system 100C, a journal (JNL1) present in original storage system 100A is reflected in the logical volume 230-5 (COPY1) of secondary storage system 100B, thereby making it possible to refer to and to update the newest data with the host computer connected to secondary storage system 100B. Furthermore, a storage capacity necessary for data replication can be decreased by storing only the journals, without holding data replication in original storage system 100A.

In the above-described data processing system in accordance with the present invention, secondary storage system 100B reads (pulls) the journal from original storage system 100A. But, the present invention also works well when original storage system 100A transfers the journal to secondary storage system 100B at a timing given for the next journal command, as described above.

While the invention created by the inventors has been described in terms of the preferred embodiments, those embodiments have been disclosed for illustrative purposes and those skilled in the art will appreciate that the invention is not limited to the above-described embodiments and various modifications, additions and substitutions are possible without departing from the scope and spirit of the invention as disclosed in the accompanying claims. In accordance with the present invention, a storage system can be provided that is capable of performing data transmission

or data replication among a plurality of storage systems without affecting host computers in the storage systems. Further, a storage system can be provided that does not affect communication between the storage system and computers.

In accordance with the present invention, the data storage areas held in a plurality of storage systems can be reduced. Furthermore, data transfer or data replication between a plurality of storage systems can be conducted effectively and at a high speed producing no effect on the operation of the host computer of the plurality of storage systems.

What is claimed is:

1. A system for storing data comprising:

a first storage system to be coupled to a host device executing an operation using data stored in the first storage system wherein the first storage system includes a plurality of first disk drives, a first controller coupled to the first disk drives, a first storage area configured in the first disk drives, and a second storage area configured in the first disk drives; and

a second storage system coupled to the first storage system, wherein the second storage system includes a plurality of second disk drives, a second controller coupled to the second disk drives, a third storage area, and a fourth storage area configured in the second disk drives;

wherein the first controller is configured to receive data to the first storage area from the host device, and write the data received from the host device in the first storage area,

wherein if the first storage area is defined as an original storage area, whose data is replicated in the fourth storage area, the first controller is configured to write the data received from the host device and information relating to a write order of the data in the second storage area,

wherein when a request for transmission of the data and the information relating to the write order of the data is received from the second storage system, the first controller is configured to transmit the data and the information relating to the write order of the data from the second storage area to the second storage system in response to the request from the second storage system, and

wherein the second controller is configured to transmit the request for transmission of the data and the information relating to the write order of the data, write the data and the information relating to the write order of the data, which are received from the first storage system in response to the request, in the third storage area, and write the data received from the first storage system in the fourth storage area according to the information related to the write order of the data, which is stored in the third storage area.

2. A system according to claim 1,

wherein the second storage area includes a first region for storing the information relating to the write order of the data and a second region for storing the data received from the host device.

3. A system according to claim 1,

wherein the second controller is configured to transmit the request for transmission of the data and the information relating to the write order of the data repeatedly, and decide a timing of transmission of the request according to data traffic between the first storage system and the second storage system.

4. A system according to claim 1, wherein the second controller is configured to transmit the request for transmission of the data and the information relating to the write order of the data repeatedly, and decide a timing of transmission of the request according to a storage capacity of the third storage area.

5. A system according to claim 1,

wherein the second controller is configured to transmit the request for transmission of the data and the information relating to the write order of the data repeatedly, and decide a timing of transmission of the request according to a processing load of the second storage system.

6. A system according to claim 1,

wherein the second controller is configured to transmit the request for transmission of the data and the information relating to the write order of the data repeatedly, and wherein the second controller is configured to read from the first storage system information relating to a storage capacity of the second storage area in the first storage system, and decide a timing of transmission of the request according to the information relating to the storage capacity of the second storage area.

7. A system according claim 1,

wherein the second controller is configured to transmit the request for transmission of the data and the information relating to the write order of the data repeatedly, wherein the first storage system is configured to hold management information relating to the second storage area, and

wherein the second controller is configured to read the management information relating to the second storage area from the first storage system, and decide a timing of transmission of the request according to the management information.

8. A system according to claim 1,

wherein a plurality of first storage areas are configured in the first disk drives, and a plurality of fourth storage areas are configured in the second disk drives,

wherein if the plurality of first storage areas are defined as original storage areas corresponding to the plurality of fourth storage areas, the first controller is configured to write data to be stored in the plurality of first storage areas and information relating to a write order of the data to be stored in the plurality of first storage areas in the second storage area, and

wherein the second controller is configured to write the data received from the first storage system in the plurality of fourth storage areas according to the information related to the write order of the data, which is stored in the third storage area.

9. A system according to claim 1,

wherein the second controller is configured to control the timing of writing data in the fourth storage area according to a processing load of the second storage system.

10. A system according to claim 1,

wherein the first controller includes a host adapter for sending data to and receiving data from the host device, a cache for temporarily storing data received by the host adapter, and a disk adapter for transferring data stored in the cache to the plurality of first disk drives, and

wherein a plurality of logical volumes are configured in the first disk drives, and both the first storage area and the second storage area are selected from the plurality of logical volumes.

25

11. A system according to claim 1,
wherein the second controller includes a host adapter for receiving data from the first storage system, a cache for temporarily storing data received by the host adapter, and a disk adapter for transferring data stored in the cache to the plurality of second disk drives, and
wherein a plurality of logical volumes are configured in the plurality of second disk drives, and both the third storage area and the fourth storage area are selected from the plurality of logical volumes.
12. A system according to claim 1,
wherein the third storage area in the second storage system is configured in the second disk drives.
13. A system according to claim 1,
wherein the first storage system further comprises a cache memory, and when the first controller receives data to the first storage area from the host device, the first controller is configured to store the data received from the host device in the cache memory, write the data stored in the cache memory in the first storage area, and write the data stored in the cache memory and the information relating to the write order of the data in the second storage area if the first storage area is defined as the original storage area.
14. A system according to claim 1,
wherein the second storage system is configured to instruct the first storage system to release a part of storage area in the second storage area by transmitting information indicating the part of storage area to be released.
15. A system according to claim 1,
wherein the information indicating the part of storage area to be released is included in the request for transmission of the data and the information relating to the write order of the data, and transmitted from the second storage system to the first storage system.
16. A system according to claim 1, wherein
if the first storage area is defined as the original storage area, whose data is replicated in the fourth storage area, the first controller is configured to transmit a completion report of writing the data to the host device after preparing to write the data and the information relating to the write order of the data in the second storage area, and
if the first storage area is not defined as the original storage area, the first controller is configured to transmit a completion report of writing the data to the host device after preparing to write the data in the first storage area.
17. A system for storing data comprising:
a first storage system coupled to a host device executing an operation using data stored in the first storage system, wherein the first storage system has a plurality of first disk drives, a first controller coupled to the first disk drives, and a first storage area configured in the first disk drives;
a second storage system coupled to the first storage system, wherein the second storage system has a plurality of second disk drives, a second controller coupled to the second disk drives, a second storage area configured in the second disk drives, and a third storage area configured in the second disk drives; and
a third storage system coupled to the second storage system, wherein the third storage system has a plurality of third disk drives, a third controller coupled to the third disk drives, a fourth storage area, and a fifth storage area configured in the third disk drives;

26

- wherein the first controller is configured to write data received from the host device in the first storage area and transmit the data received from the host devices to the second storage system,
- wherein the second controller is configured to write data received from the first storage system in the second storage area, and if the second storage area is defined as an original storage area, data stored in which is copied in the fifth storage area of the third storage system, the second controller is configured to write the data received from the first storage system and information regarding to write order of the data in the third storage area,
- wherein when a command for requesting transmission of the data and the information regarding to the write order of the data, which are stored in the third storage area, is received from the third storage system, the second controller is configured to transmit the data and the information regarding to the write order of the data from the third storage area to the third storage system in response to the command, and
- wherein the third controller is configured to transmit the command for requesting transmission of the data and the information regarding to the write order of the data, which are stored in the third storage area, to the second storage system, write the data and the information regarding to the write order of the data, which are received from the second storage system in response to the command, in the fourth storage area, and write the data stored in the fourth storage area in the fifth storage area by using information regarding to the write order of the data, which is stored in the fourth storage area.
18. A system according to claim 17,
wherein the third controller is configured to transmit the command to the second storage system repeatedly, and the third controller is configured to decide a timing of transmission of the command according to amount of the data and the information regarding to the write order of the data received from the second storage system.
19. A system according to claim 17,
wherein the third controller is configured to transmit the command to the second storage system repeatedly, and decide a timing of transmission of the command according to data traffic between the second storage system and the third storage system.
20. A system according to claim 17,
wherein the third controller is configured to transmit the command to the second storage system repeatedly, and decide a timing of transmission of the command according to a capacity of the fourth storage area.
21. A system according to claim 17,
wherein the third controller is configured to transmit the command to the second storage system repeatedly, and decide a timing of transmission of the command according to processing load of the third storage system.
22. A system according to claim 17,
wherein the third controller is configured to transmit the command to the second storage system repeatedly, read from the second storage system the information relating to a storage capacity of the third storage area in the second storage system, and decide a timing of transmission of the command according to the information relating to the storage capacity of the third storage area.

27

23. A system according to claim 17,
wherein the third controller is configured to transmit the
command to the second storage system repeatedly, read
from the second storage system management informa- 5
tion relating to amount of the data and the information
regarding to the write order of the data, which are
stored in the third storage area, and decide a timing of
transmission of the command according to the man-
agement information read from the second storage
system. 10
24. A system according to claim 17,
wherein the third controller is configured to transmit the
command to the second storage system repeatedly.
25. A system according to claim 17,
wherein the third controller is configured to control a 15
timing of writing data stored in the fourth storage area
to the fifth storage area according to a processing load
of the third storage system.
26. A system according to claim 17,
wherein the fourth storage area in the third storage system 20
is configured in the third disk drives.
27. A system according to claim 17,
wherein the second storage system further comprises a
cache memory, and when the second controller receives
data from the first storage system, the second controller 25
is configured to store the data received from the first
storage system in the cache memory, write the data
stored in the cache memory in the second storage area,
and write the data stored in the cache memory and the
information relating to a write order of the data in the 30
third storage area if the second storage area is defined
as the original storage area.
28. A system according to claim 1,
wherein the first storage system includes a plurality of
first storage areas, the second storage system includes 35
a plurality of fourth storage areas, and wherein a
plurality of copy pairs are defined, each of which
includes one of the plurality of first storage areas and
one of the plurality of fourth storage areas,
wherein at least one group including at least one copy pair 40
is defined in order to maintain consistency of data in the
at least one group in case of stop operations for
replicating data of the first storage area in the fourth
storage area, and
wherein the first controller and the second controller are 45
configured to hold information relating to the group.

28

29. A system according to claim 28,
wherein the second controller is configured to transmit the
request for transmission of the data and the information
relating to the write order of the data according to the
information relating to the at least one group.
30. A system according to claim 1,
wherein the second controller is configured to start to
transmit the request for transmission of the data and the
information relating to the write order of the data, when
the second controller receives an instruction to initiate
remote copy operations.
31. A system according to claim 30,
wherein the first controller is configured to transmit the
instruction to initiate remote copy operations to the
second storage system, when the first controller
receives an instruction to initiate remote copy opera-
tion, the instruction including identification related to
the fourth storage area, from the host device.
32. A system according to claim 1,
wherein the second controller is configured to determine
whether or not retransmission of the data and the
information relating to the write order of the data is
needed, and when the retransmission is needed, the
second controller is configured to transmit the request
for retransmission of the data and the information
relating to the write order of the data to the first storage
system.
33. A system according to claim 1,
wherein the second controller is configured to write the
data received from the first storage system in the fourth
storage area according to the information related to the
write order of the data, so that the write order of the
data in the fourth storage area is maintained after an
operation for replicating data of the first storage area in
the fourth storage area is stopped.
34. A system according to claim 17,
wherein the third controller is configured to write the data
stored in the fourth storage area in the fifth storage area
by using the information regarding the write order of
the data, so that write order of the data in the fifth
storage area is maintained after an operation for copy-
ing data of the second storage area in the fifth storage
area is stopped.

* * * * *