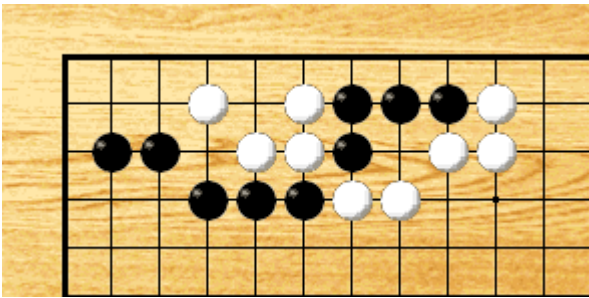


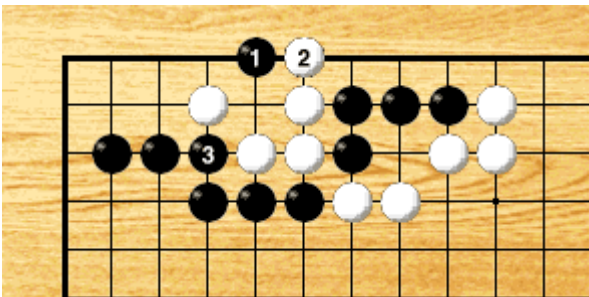
Elementary level

Problem



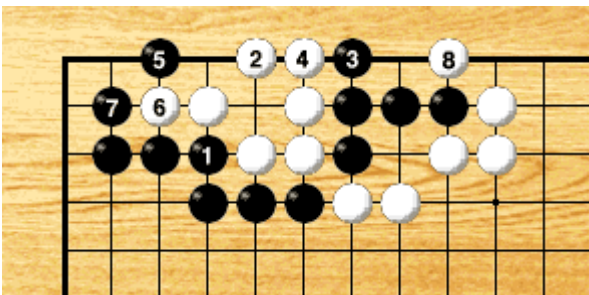
Black to play.

Answer



Black 1 is the vital point to win the capturing race.

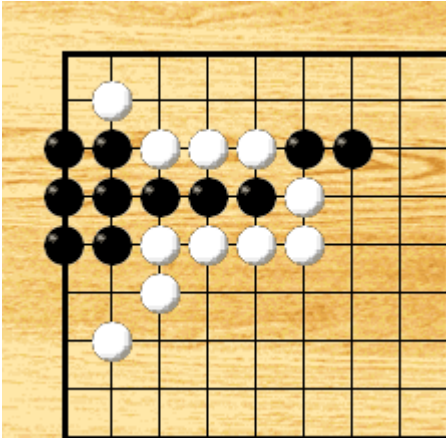
Wrong Answer



Black 1 allows White the vital point 2.  
Black loses the race.

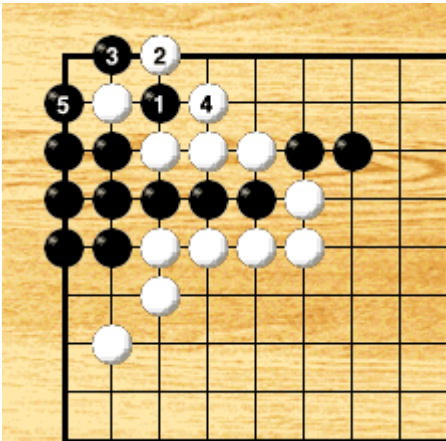
Intermediate level

Problem



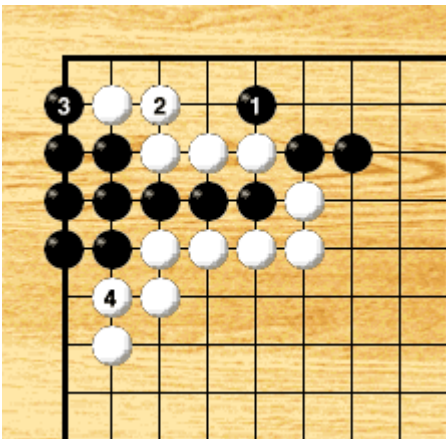
Black to play.

Answer



Black 1 is crucial.  
If White 2, Black 3 is crucial to get a Ko.

Wrong Answer



Black 1 is wrong.  
With White 2, Black loses the capturing race.