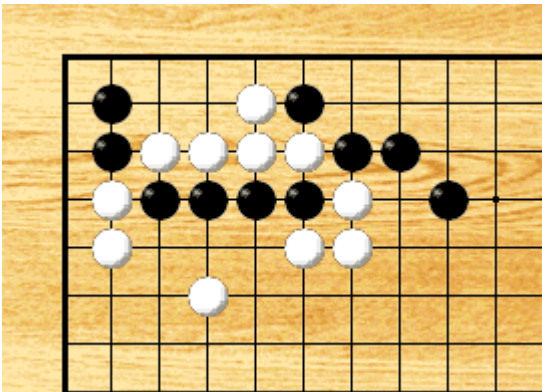


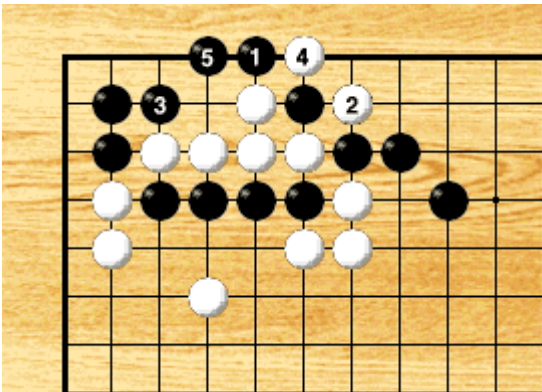
Elementary level

Problem



Black to play.

Answer

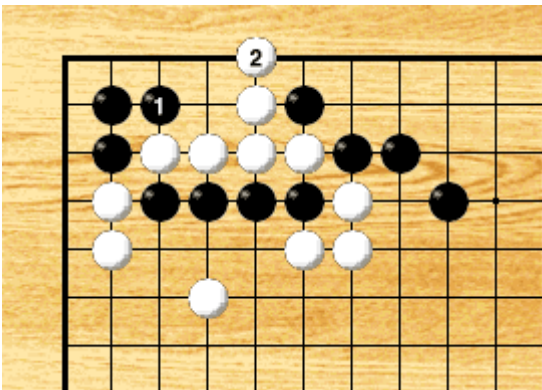


Black 1 is crucial.

If White 2, Black wins the capturing race with 3 and 5.

If White 2 at 5, Black wins with 3.

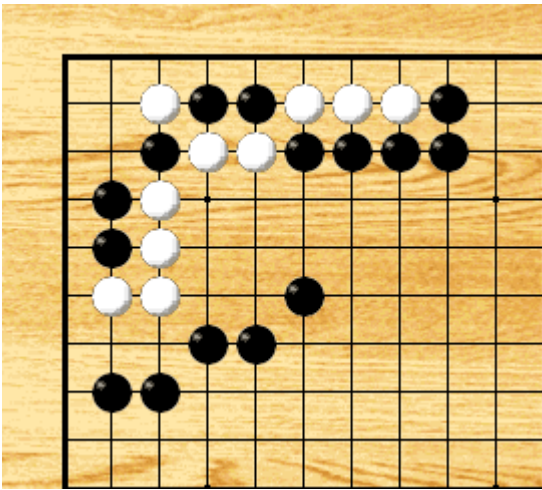
Wrong Answer



Black 1 allows White the vital point 2 and loses the race.

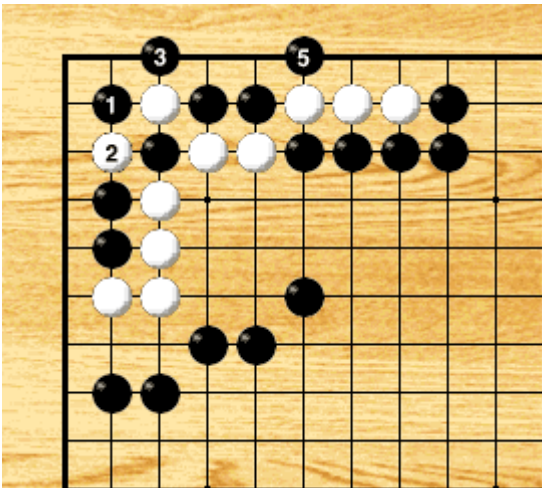
Intermediate level

Problem



Black to play.

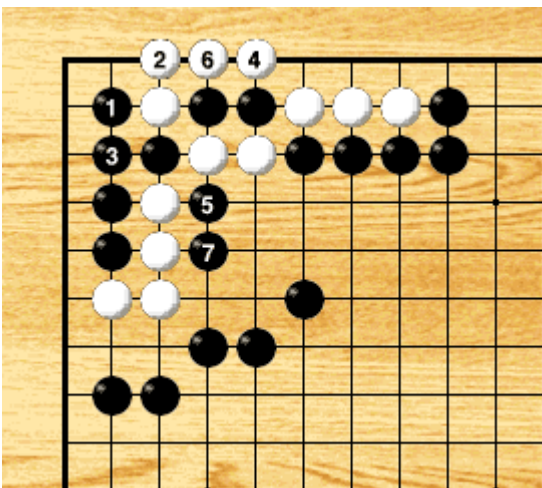
Answer



Black 1 and 3 are crucial, and can capture the three White stones.

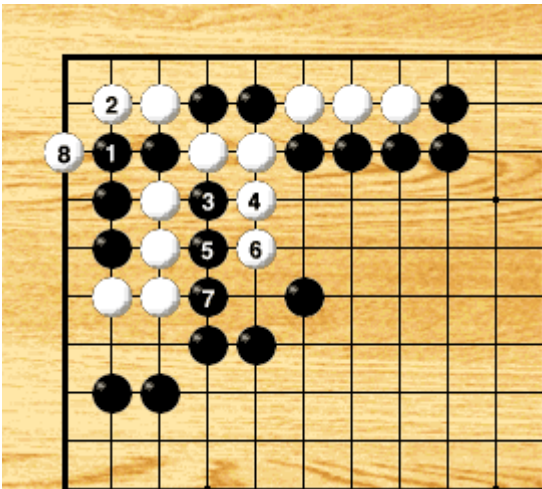
4 : connects right of 2

Answer (Variation)



If White 2, Black captures the four White stones with 3 and 5.

Wrong Answer



Black 1 is wrong.  
With White 2, Black dies.