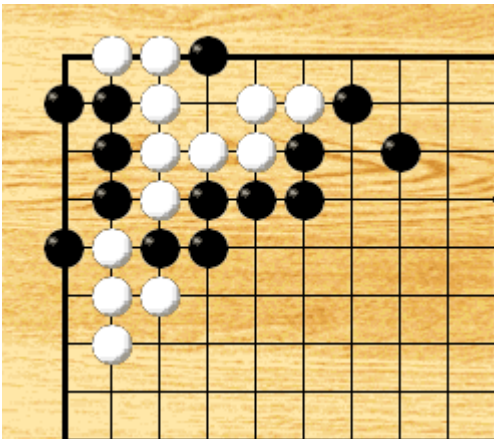


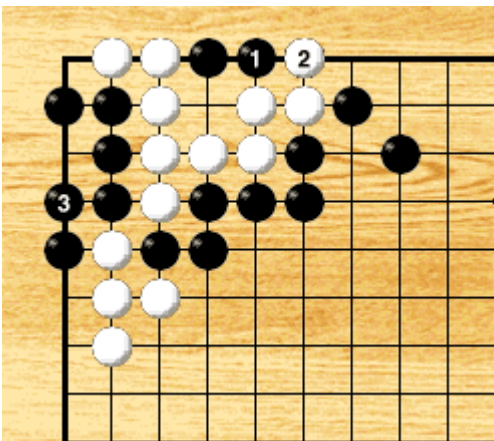
Elementary level

Problem



Black to play.

Answer

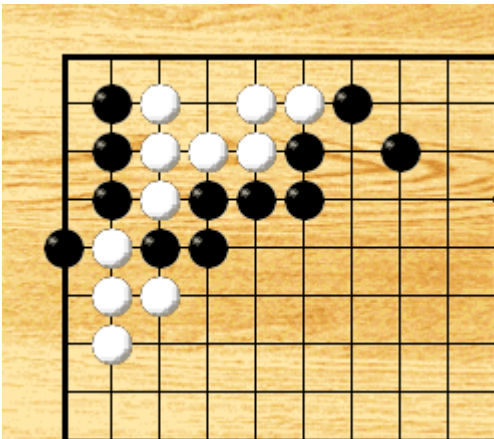


Black 1 is crucial.

After White 2, Black 3 results in a *Seki*.

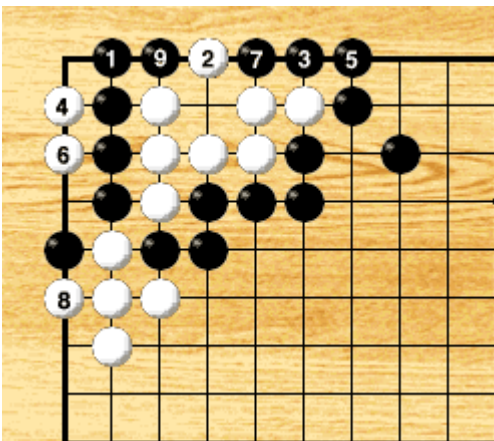
Intermediate level

Problem



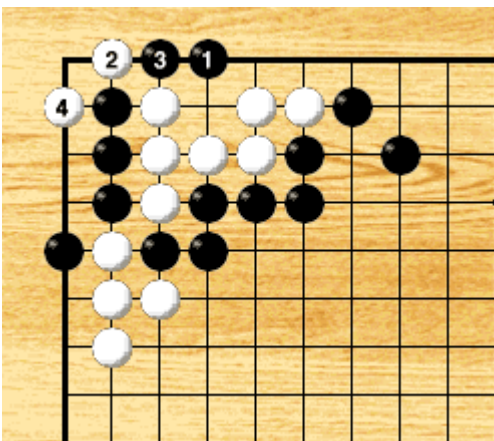
Black to play.

Answer



Black 1 is the vital point.
If White 2, Black wins with 3 to 9.

Wrong Answer



Black 1 allows White to get a Ko with 2 and 4.