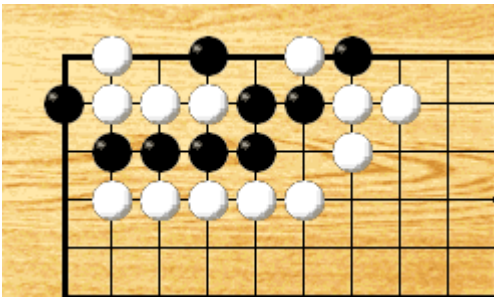


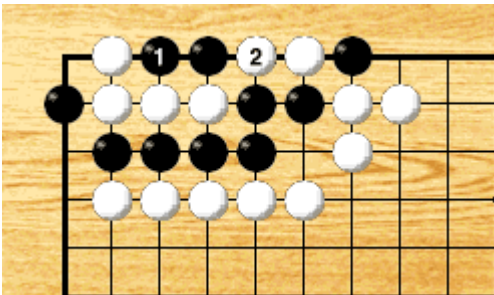
Elementary level

Problem



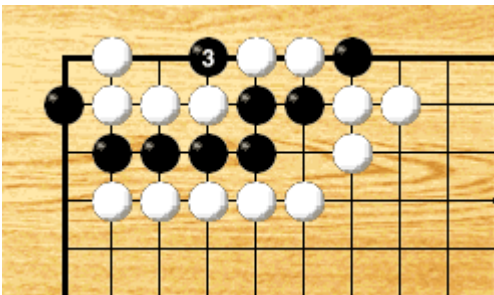
Black to play.  
Let's study the rare shape of *Chosei* (Longevity), wishing for good luck for the new year.

Answer



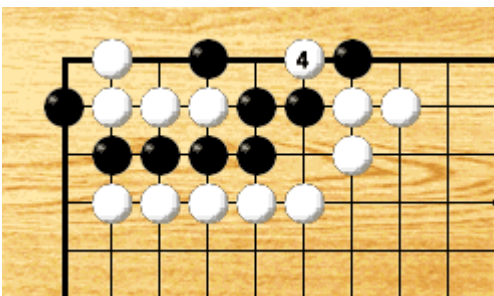
Black 1 is crucial.  
After White 2 takes the two Black stones, to the next diagram.

Answer (Continued 1)



After Black 3 takes the two White stones, to the next diagram.

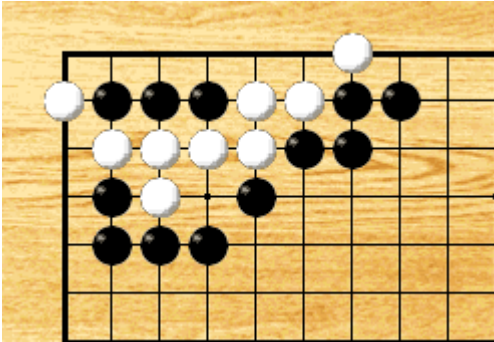
Answer (Continued 2)



With White 4, it returns to the initial shape.  
Unless either side concedes, it repeats itself endlessly, so results in no game.

Intermediate level

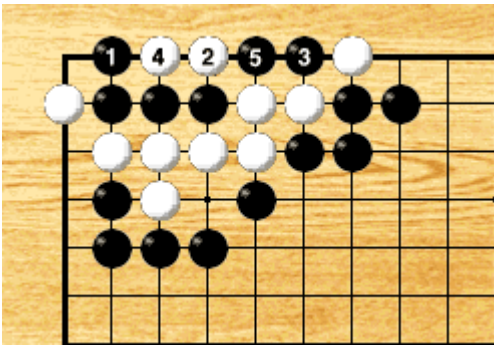
Problem



Black to play.

Let's review the rare shape of *Chosei* (Longevity), wishing for good luck for the new year.

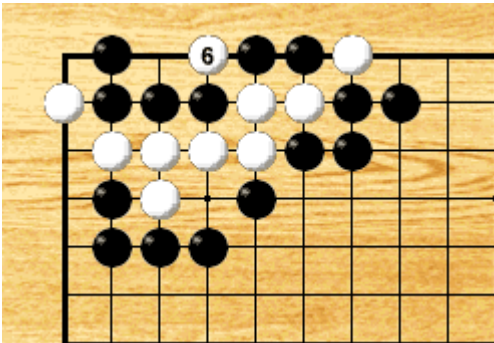
Answer



After Black 1 and 3, White 4 creates a rare shape of *Chosei* (Longevity).

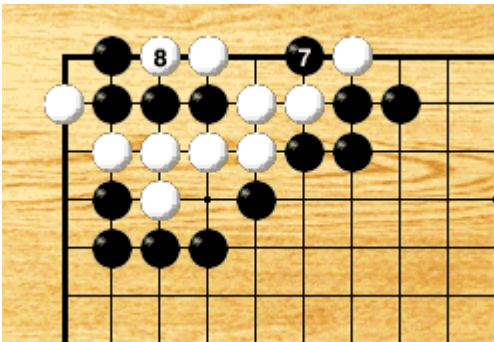
If Black 5, to the next diagram.

Answer (Continued 1)



If White 6, to the next diagram.

Answer (Continued 2)



Black 7 and White 8 comes back to the shape of four moves before, and it repeats itself endlessly.