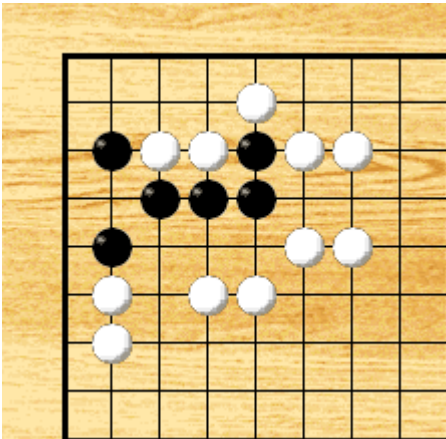


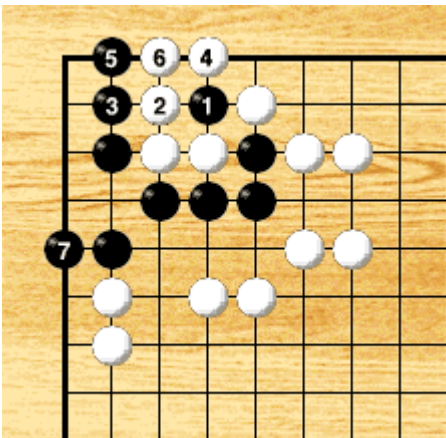
Elementary level

Problem



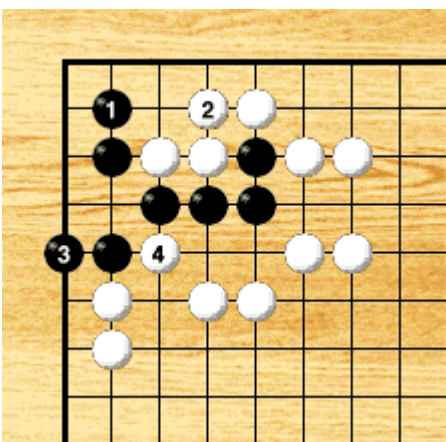
Black to play.

Answer



Black 1 is crucial to live with the moves to 7.

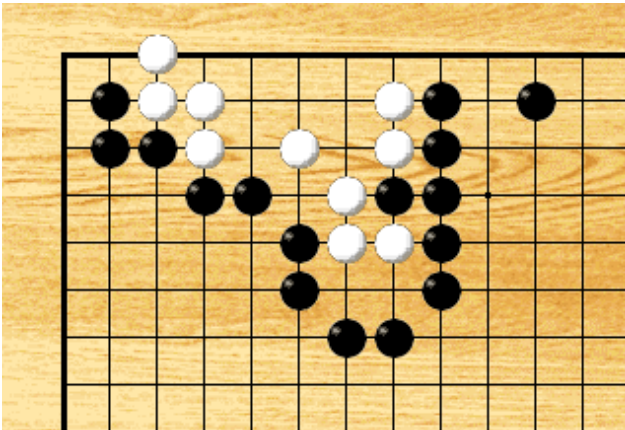
Wrong Answer



Black 1 is wrong.
With White 2, Black dies.

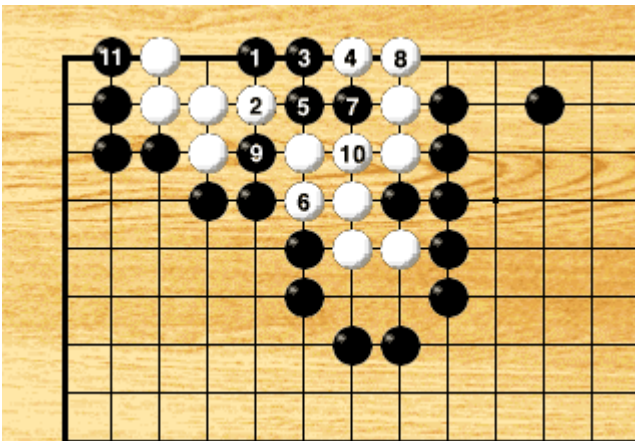
Intermediate level

Problem



Black to play.

Answer



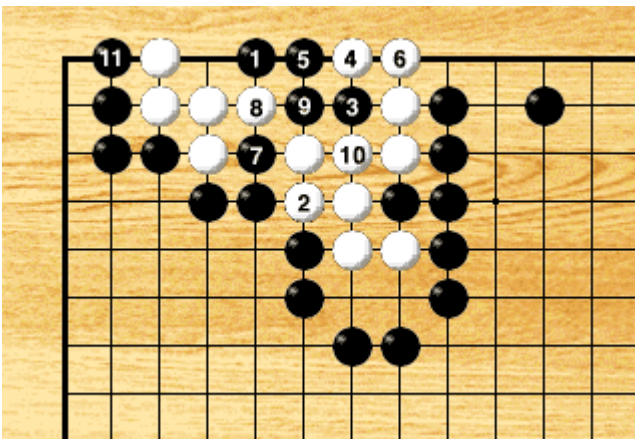
Black 1 is the vital point.

If White 2, Black 3 and 5 are crucial.

If White 6, Black creates an "under the stone" with 7 to 11.

White dies.

Answer (Variation)



If White 2, Black creates the same under the stone with 3 to 11.