

Efficient integrated management of an entire enterprise information system reduces operation management costs and assists the secure operation of the system!

HITACHI
Inspire the Next

- JP1/Integrated Management - Manager -



As IT systems increase their importance as the infrastructure of business enterprises, the needs for high standards in service quality are increasingly growing. In addition, to meet a variety of business needs, systems are continuously becoming larger and more complicated. With this, the management workload on a system is becoming increasingly heavier, and manual management can no longer deal with this situation.

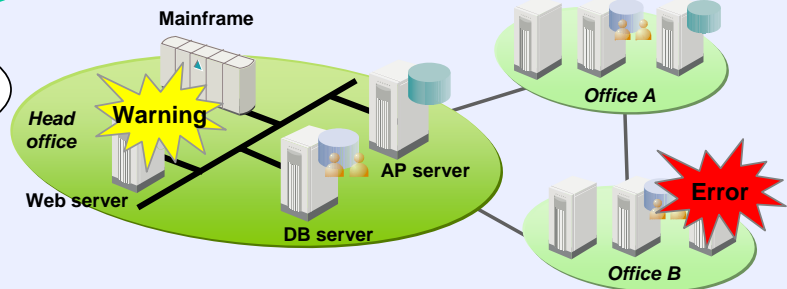
JP1/Integrated Management manages the status of resources and business applications (services) in accordance with the intentions of the administrator.



Integrated management of enterprise information system

Administrator's worries

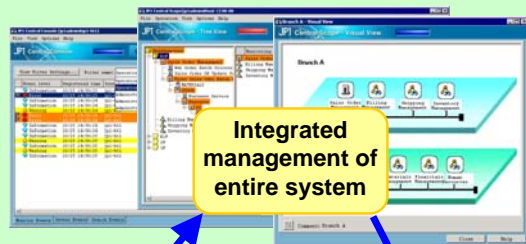
Because the system is large scale and complicated, it is difficult to monitor the entire system.



It is a waste of time to check whether the system is running normally (the status of application execution, patch distribution, and OS) at each GUI, or to travel to remote offices every time trouble occurs in a PC.

If a warning or error occurs in the system, it takes a long time to locate the affected range. In addition, I don't know how to inspect those problems or what action to take...

JP1/Integrated Management



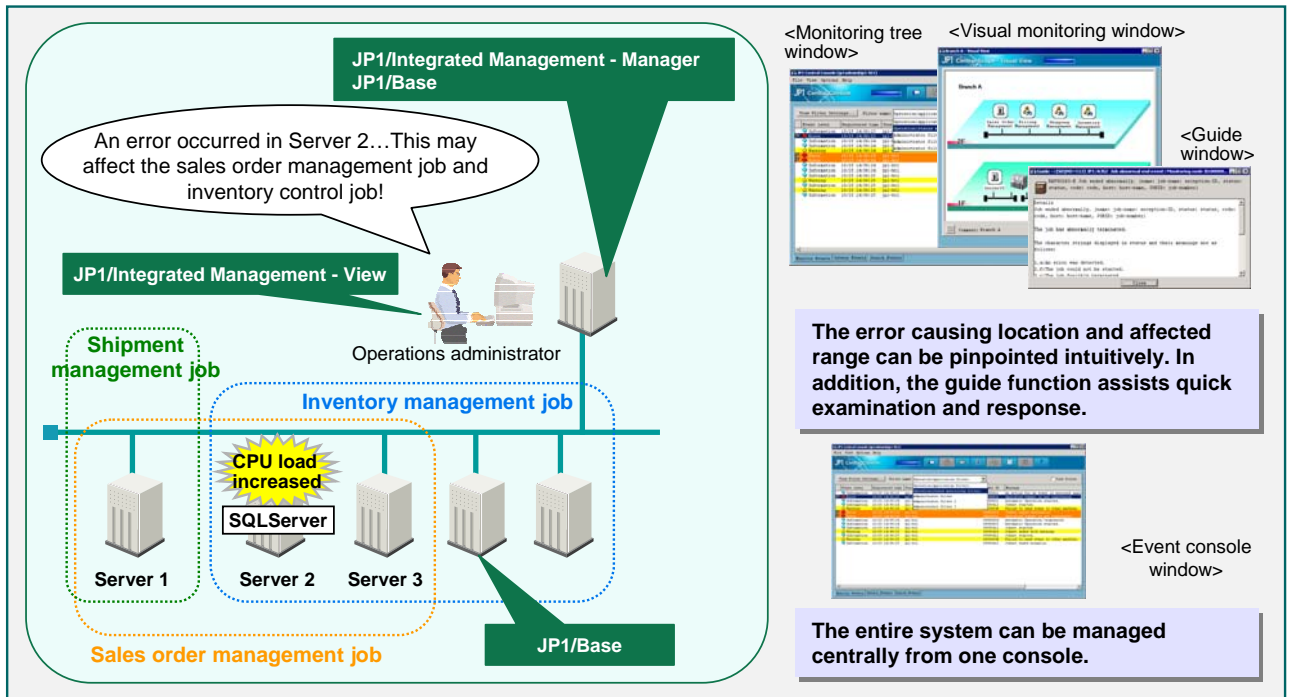
Inspect, judge, respond

Efficient integrated management of the entire enterprise information system reduces the burden of the administrator. This helps the administrator place his/her focus on the core business.



- The administrator can grasp the status of the entire system from one console.
- Simply by tracking icons in a visual window, the administrator can easily locate the cause of the trouble and the range of its effect.
- The administrator can inspect the trouble and take action while referring to an appropriate guide.

JP1 centrally manages the entire information system in accordance with the intentions of the administrator, and reduces the burden of the administrator.



● Central monitoring of various events

Windows event log, UNIX syslog, log of any application, business application execution status and network troubles can be monitored centrally from one console screen.

● Simple monitoring of even complicated systems

Complicated systems can be grouped in a tree format for management in accordance with the administrator's viewpoint and intention. Because the error occurrence state spreads towards higher levels, the administrator can recognize the affected range at first sight.

● Automation of operations by automatic action

At the timing when a specific event occurs or an error is detected in a monitoring group, commands such as recovery processing can be automatically executed.

● Check and response by command execution from a remote location.

Because commands can be executed for remote machines, details of errors can be checked and countermeasures can be taken from a remote location.

● Calling linked products by starting the monitor

The management window of the linked product relating to the received event can be called from the event console window. This enables the administrator to quickly check detailed information of the event and determine the cause of the event.

● Event handled/not handled indication by which the response status can be seen at a glance

According to the response progress, four response states of "handled", "in process", "hold" and "not handled" can be set. This prevents the administrator from forgetting to handle events.

● Guide function to support error recovery

The guide function indicates the pre-registered countermeasures when an error occurs, enabling quick error recovery.

Product configuration

Product name
JP1/Integrated Management - View
JP1/Integrated Management - Manager
JP1/Base

Inquiries about these products

Feel free to contact us regarding these products:

Information service

Further information about JP1 can be found online at:

<http://www.hitachi.co.jp/jp1-e>

JP1 is an acronym for Job Management Partner 1.

The company and product names in this document are trademarks or registered trademarks of their respective companies.