

Assists the analysis of job operation status and promptly detects potential problems that may occur during job operation.

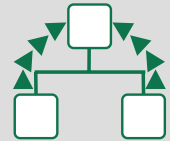
- JP1/Performance Management - Agent Option for Job Management -

**HITACHI**  
Inspire the Next

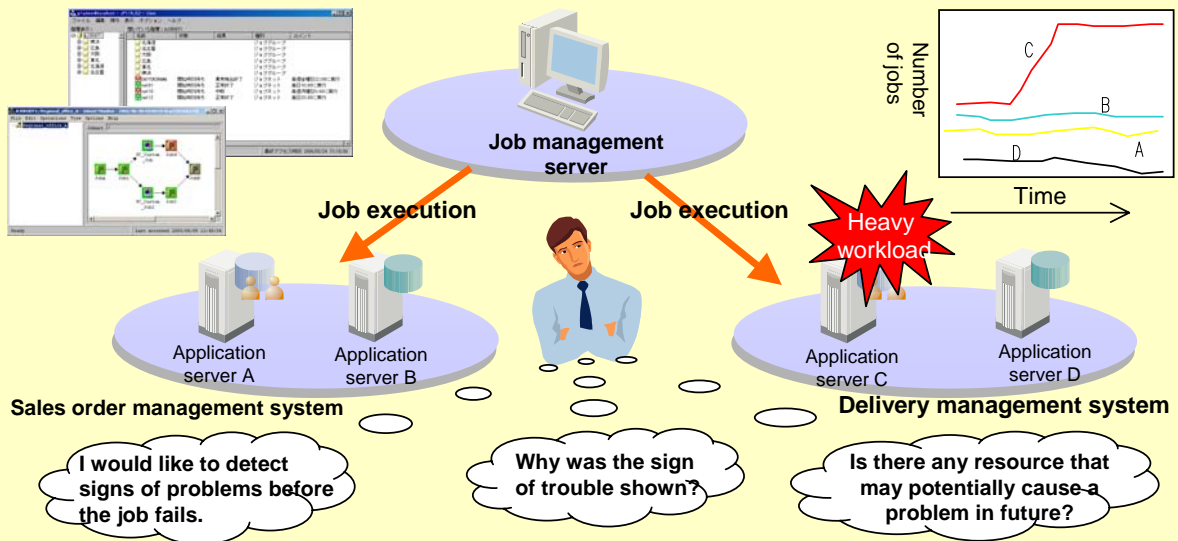
**JP1**  
Version 8

Availability Management

Simultaneously monitors the job execution status and resource information on the job server, detects signs of potential troubles, and inspects the causes of troubles to forestall job system failure.



Eliminates various problems involved in job operation in advance



Monitoring window



**Detection of error signs**  
Monitors the operation status of JP1/AJS2 and detects signs that may potentially lead to job failure.

Correlation graph

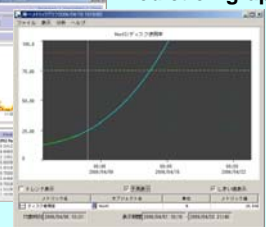


**Inspection of problems**  
Analyzes the operation information to locate the causes of error signs.

CPU usage



Prediction graph



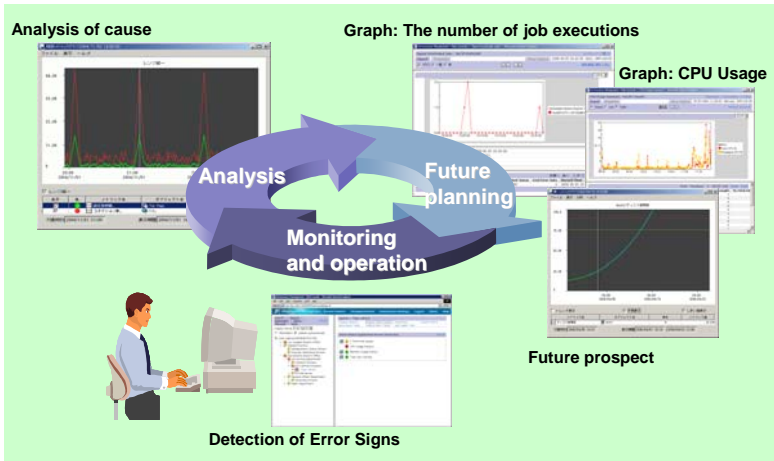
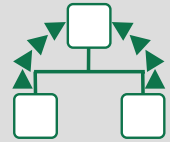
**Prediction of problems**  
Based on the accumulated data, you can predict the location that may potentially cause a future problem in the system.

**Effects of installation**

Achieves secure job operation by detecting signs of errors before they actually occur in the job, locating the causes and taking preventive actions!



# Executing a sequence of operations as an operating cycle from error sign detection to analysis assures stable job operation.



## ● Features of job monitoring system

### [Monitoring and operation - detection of error signs - ]

- Collects the operation information of JP1/AJS2 and if a sign of error that may potentially lead to job failure is detected, notifies the administrator of the event.

- <<Main JP1/AJS2 monitoring items of JP1/PFM>>
- Number of jobs/jobnets that have started execution
  - Number of jobs/jobnets that ended execution
  - Number of delayed jobnets
  - Number of submitted jobs
  - Number of held jobs
  - Maximum holding time/Average holding time, etc.

### [Analysis - inspection of problems - ]

- By using the analysis function, you can extract the performance information that is most likely to cause problems.

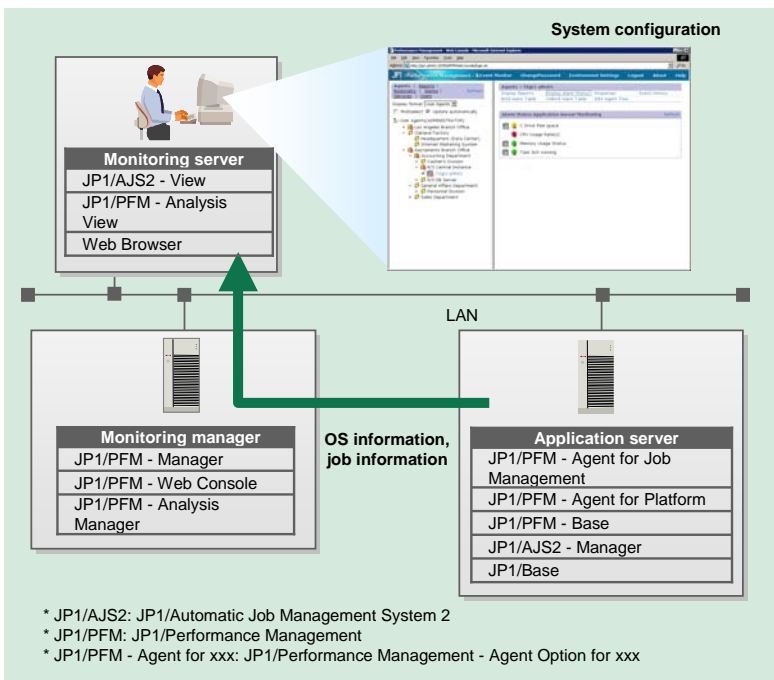
### [Future planning - prediction of problems - ]

- Predicts whether there is any resource that may be insufficient in future. The predicted information can be utilized in system planning to decide what should be processed by priority.

- Removes the causes that may cause job failure in advance to achieve secure job operation.

## Product configuration

Product name
JP1/Performance Management - Analysis View
JP1/Performance Management - Manager
JP1/Performance Management - Web Console
JP1/Performance Management - Analysis Manager
JP1/Performance Management - Agent Option for Job Management
JP1/Performance Management - Agent Option for Platform
JP1/Performance Management - Base
JP1/Automatic Job Management System 2 - View
JP1/Automatic Job Management System 2 - Manager
JP1/Base



\* JP1/AJS2: JP1/Automatic Job Management System 2  
 \* JP1/PFM: JP1/Performance Management  
 \* JP1/PFM - Agent for xxx: JP1/Performance Management - Agent Option for xxx

## Inquiries about these products

Feel free to contact us regarding these products:

## Information service

Further information about JP1 can be found online at:

<http://www.hitachi.co.jp/jp1-e>

JP1 is an acronym for Job Management Partner 1.

The company and product names in this document are trademarks or registered trademarks of their respective companies.