

# Software Distribution and Inventory Management

Centrally manages distribution and inventory information

**HITACHI**  
Inspire the Next

**JP1** Version 8 Desktop Management

Software distribution and asset management uses a network to distribute software and manage client assets. Using software distribution and asset management enables you to automate client management, thereby saving labor.

## Features

### Promptly creation of a management ledger of in-house PCs

Via the network, hardware information (such as CPU types and clock cycles) and information about installed software, anti-virus products (such as engine versions and definition files), and information specific to the user (such as the user, affiliation, and asset number) can be collected. The collected information can be tabulated, viewed, and printed, so that it can be used to check such things as the number of installation licenses. You can even collect information from PCs that are not connected to the network, through the use of media.

### Flexible and efficient distribution

Through a single operation, you can automatically distribute and install software from a central server onto clients distributed in various locations. You can also centrally check the distribution status and installation results on the central server. Software is distributed efficiently even on a large system, making it possible to lighten the management burden and reduce management costs.

### Distributing software by layering the system

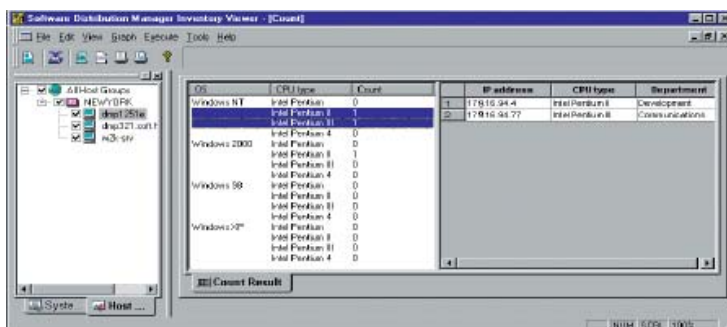
In a large network, installing relay machines enables you to distribute software without exerting load on the network. Further, by using relay machines as department servers, you can allocate servers to be used for general operations separately from those to be used for departmental operations.

### Detailed distribution specifications

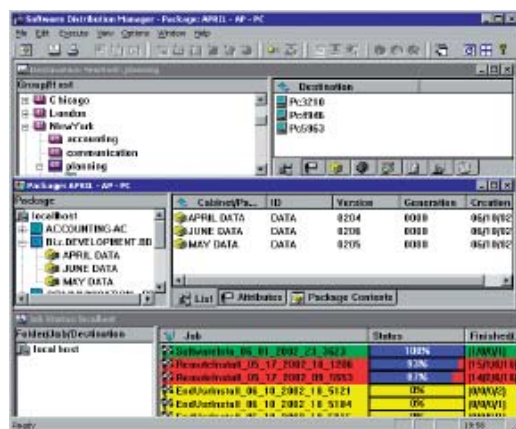
You can select a distribution method to suit your system operations, such as distribution by group or distribution at specified times.

## Key Functions

Functionality	Description
Management of inventory information	Acts as an asset management function, enabling you to collect inventory information for each client. Representative examples of items that can be collected : - Hardware information CPU type, clock cycle, real memory capacity, IP address, OS information, OS version - Software information Windows hot-fix information - Anti-virus product information Engine version, definition file version, residence status, etc. - User information User name, affiliation, asset number, etc.
Software distribution	Enables you to distribute software from the central server using various methods.
File collection	Promotes faster response to failures by centrally managing different data for each client.
Optional function	Initial installation support, which automatically installs and sets up clients.



Inventory Viewer



Distribution status

## System Configuration Example

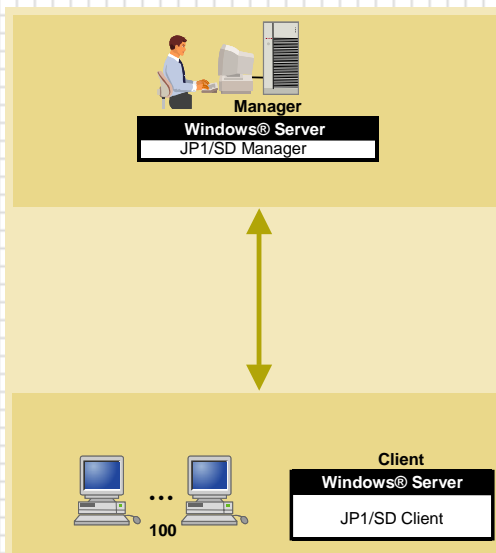
### Distribution management and inventory management

- Perform distribution flexibly and efficiently
- Promptly create a management ledger of in-house PCs.

#### 100 Client PCs

##### Configuration

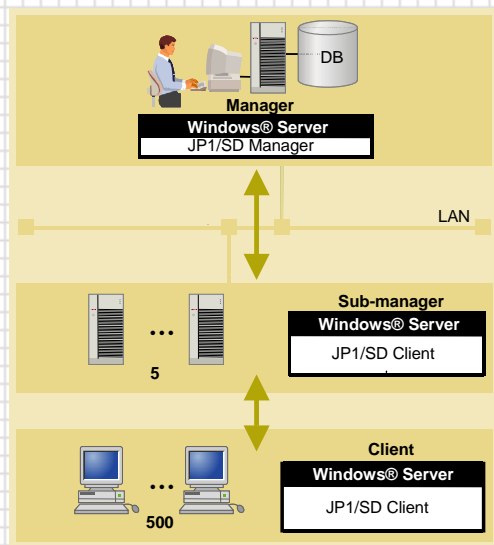
- Manager Windows® Server x 1
- Client Windows® Server x 100



#### 500 Client PCs

##### Configuration

- Manager Windows® Server x 1
- Sub-manager Windows® Server x 5
- Client Windows® Server x 500



JP1/SD: JP1/Software Distribution

#### Inquiries about these products

Feel free to contact us regarding these products:

#### Information service

Further information about JP1 can be found online at:

<http://www.hitachi.co.jp/jp1-e>

JP1 is an acronym for Job Management Partner 1.

The company and product names in this document are trademarks or registered trademarks of their respective companies.