

Integrated Systems Management JP1 Version 8

HITACHI
Inspire the Next

- Introduction of New Features -



JP1 Version 8 implements business level operations

For continuous development of business enterprises, a tight linkage between businesses and corporate information systems, and the immediate adaptation to changes in the business environment is increasingly called for. Integrated Systems Management "JP1" has drastically reinforced its product lineup to assist in keeping service quality high and securing the transparency of businesses, and thereby JP1 supports a corporate system from the following three aspects.

- **IT compliance**
- "Protect" valuable IT assets - Centrally manages asset information to reinforce internal control based on the security policies, laws, and regulations, and takes countermeasures promptly.



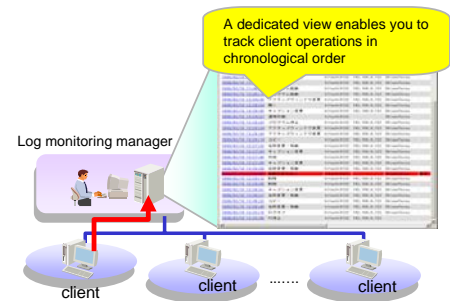
- **Automation**
- "Run" jobs according to a schedule - Helps you focus on the core business by job scheduling, system operation based on policies, and job automation.

- **Monitoring**
- "View" the whole system operation - Monitors the status of services and system operation, and any signs of system failure.

IT Compliance (Desktop Management)

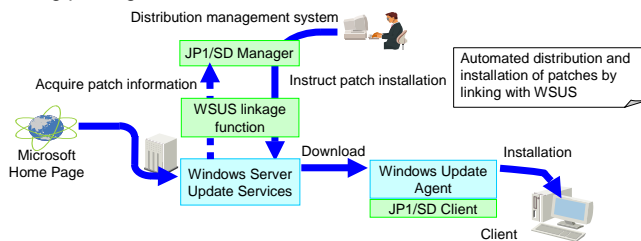
● Reinforcing the log collection function on client PCs and implementing the integrated audit of operation logs

JP1/SD enables the collection of file operation log information on client PCs. File log information such as file copy, move, name change and deletion can be managed from one console window, and user operations can be tracked as a flow of a series of user operations. In addition, JP1/SD enables you to obtain information required for file tracking, thereby implementing the reinforcement of internal control.



● Reinforcing the patch management function by linking with WSUS

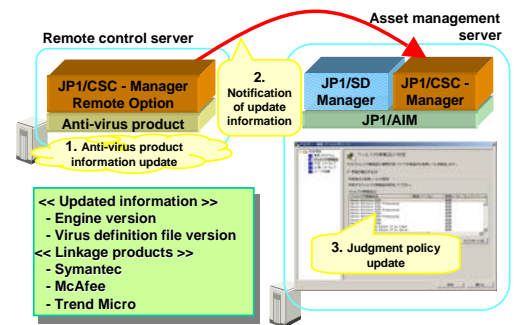
Linking with WSUS (Windows Server Update Service), JP1/SD distributes patches for Windows and Office, etc. This eases the administrator's workload of downloading patches and creating packages.



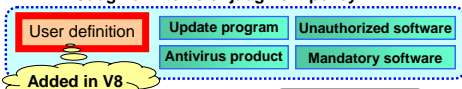
<<Log information that can be collected>>
- File copy, move, delete - PC start/stop - Application start, etc.

● Flexible security policies in accordance with the user's operation

- You can now set multiple policies to execute actions based on the automatic danger level determination in the PC client environments and its determination results.
- In addition to conventional update programs, anti-virus products, unauthorized software and essential software, you can now define all information that JP1/SD can collect. Furthermore, you can define and execute actions defined arbitrarily by users.
- The policies relating to anti-virus products are automatically updated according to their latest engine versions and virus definition versions.



Judgment items of judgment policy



| Judgment policy | | | |
|-----------------|-----------------------|----------------|----------------|
| User definition | | | |
| Item name | Comparative criterion | Compared value | Critical level |
| Auto-logout | Exact match | 1 | Caution |
| Screen saver | Exact match | 0 | Caution |

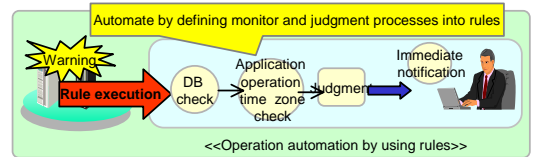
CSC action list



Monitoring (Integrated Management/Availability Management)

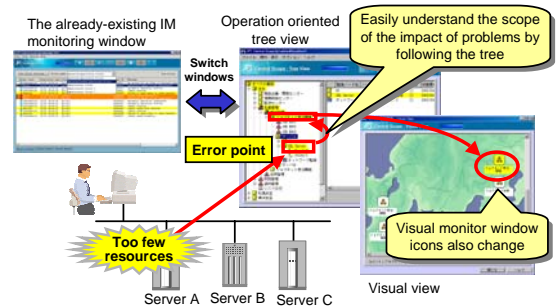
● Automating business operations upon event occurrence according to a rule

When an event such as an error occurs, JP1 judges the situation (what should be done next) and thereby automatically executes appropriate actions. In addition, because execution results can be accumulated as history information, you can improve the definitions (rules) for automated operations based on that information.



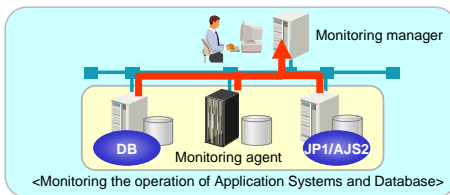
● Monitoring by a purpose-oriented integrated view

Automatic upward spread of warnings/errors implements job-oriented visual monitoring. This helps you easily locate error-affected ranges. In addition, proactive response before error occurrence is now possible. This prevents an error or a chain of errors from occurring.



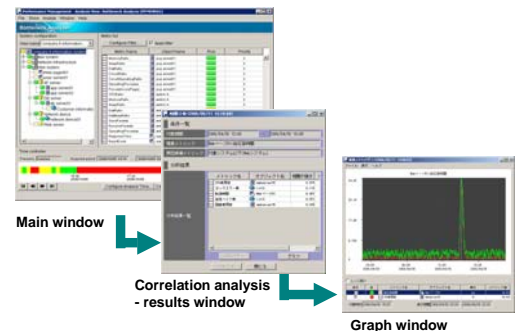
● Implementation of business application monitoring

JP1/AJS2 operation information monitoring has been newly supported. This instantly detects the degradation of job execution performance and signs of system failure in the application operation. In addition, by analyzing the past trend, JP1 helps you to create a system expansion plan.



● Proactive error protection through total system performance analysis and prediction

By centrally managing performance data, health and status for entire systems can be easily understood. Predictions based on accumulated data also allow proactive avoidance of errors as well as improvement in precision of capacity planning.



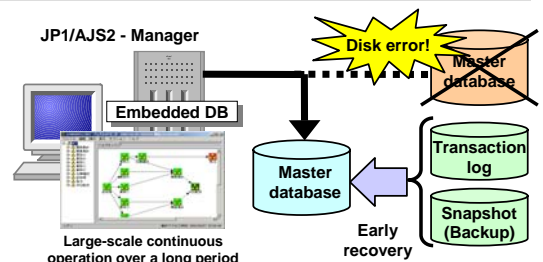
Automation (Job Management)

● Databases incorporated in JP1/AJS2 - Manager

Databases are incorporated in JP1/AJS2 - Manager as standard. This implements more reliable operation of applications. This prevents performance degradation during continuous operation, and significantly shortens the time required for current status restoring work upon failure.

● Reinforcing firewall

JP1 also supports cases when a packet filter or NAT is used between JP1/AJS2 - WOA and JP1/AJS2. This expands the range of systems that can be managed centrally by JP1/AJS2 - WOA.



Inquiries about these products

Feel free to contact us regarding these products:

Information service

Further information about JP1 can be found online at:

<http://www.hitachi.co.jp/jp1-e>



JP1 is an acronym for Job Management Partner 1.

The company and product names in this document are trademarks or registered trademarks of their respective companies.