



Hitachi Professional Engineers Association

A grouping of highly sophisticated certified engineers recognized in many countries

The largest-scale society of in-company Professional Engineers in Japan

A place for continuing professional development and technical cooperation among diversified industries

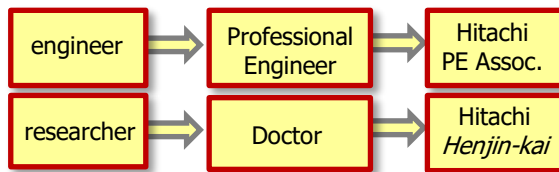


Overview

What is a "Professional Engineer"?

Professional Engineer (PE) is a national qualification based on the Professional Engineers Act, which emphasizes not only expertise and applied technology but also securing public interest and engineering ethics. In contrast to a Doctor of Philosophy, PE is an honor afforded to engineers with competency to put technology to practical use in the industrial world. Mutually certified as an engineering qualification by APEC*1 and IPEA*2, the qualification titled Professional Engineer is proof of a distinguished engineer.

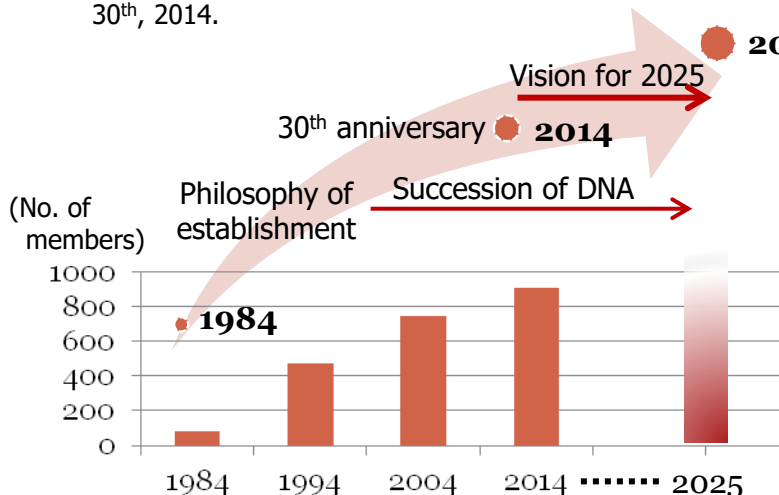
Hitachi Professional Engineers Association (Hitachi PE Assoc.) is a group of engineers composed of current and former engineers in Hitachi Group companies, those who have PE qualification. Like "Hitachi *Henjin-kai* Society" (a group of Hitachi experts with doctorates), it helps supports the technology of Hitachi Group.



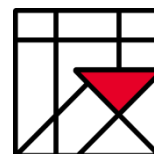
*1 APEC: Asia-Pacific Economic Cooperation
*2 IPEA: International Professional Engineer Agreement

History

Hitachi PE Assoc. was inaugurated on April 27th, 1984, and it celebrated its 30th anniversary on April 30th, 2014.



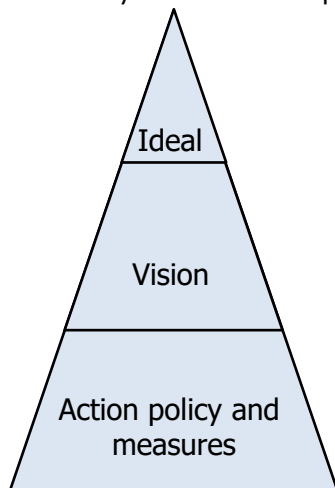
Hitachi PE Assoc. symbol



- A design that simply diagrammatizes the written Japanese character 「技」 for "skill", which is the essence of Hitachi PE Assoc.
- The red triangle shows our zeal for taking on the dual challenges of developing advanced technology while keeping our sense of ethics.

Vision 2025

Hitachi PE Assoc. is continuing the activities established in "Vision 2025"—instigated on its 30th anniversary—which lays out our developments for the next decade.



《 Hitachi's corporate philosophy 》 Contribute to society through the development of superior, original technology and products
 《 Ideal behind foundation of Hitachi PE Assoc. 》 Identify PEs in Hitachi, and play a technological role in the company

《 Vision 2025 》 To support the following two aspirations of PEs
 ■ Self-improvement by raising awareness, learning, and grow in terms of competency and wisdom as PEs
 ■ Contribution to business and society by utilizing the ability of PEs

- Undertake the role of a multi-contributor to society as well as business
- Pass on a strong sense of ethics, advanced skills, and deep empirical knowledge in the manner of "DNA"
- Become a grouping of engineers that forms a central core and supports a safe and comfortable society as well as global innovation

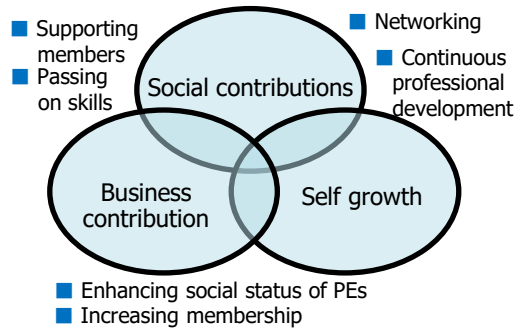
Mission

The Association is aiming to contribute to society through technology. That is, it is enhancing the momentum of widespread technological cooperation through the close-knit friendships between our members. At the same time, it is contributing to the development of Hitachi Group companies, while our members mutually enlighten each other and provide leadership for the next-generation of engineers.

Activities of Committee Members

In collaboration with the companies, committees, and our members, Hitachi PE Assoc. is aiming to partake in the following activities for members by members:

- Holding training workshops and general assemblies, technical tours, and
 - Publishing newsletters
 - Introducing members to organizations requiring technical skills
 - Supporting business and social contributions of members with the aim of raising the standing of PEs
 - Creating mutual friendships with other members



Activities by Members of Action Groups

Through activities that make multiple contributions to society and Hitachi's business pursuits, members voluntarily target improving mutual qualities and forming exchange networks covering multiple fields.

- Workshops and symposiums for continuing professional development supported by the Planning Committee.



Association symposium held with the Railway Technical Research Institute

- Supporting social contributions and business contributions of members.



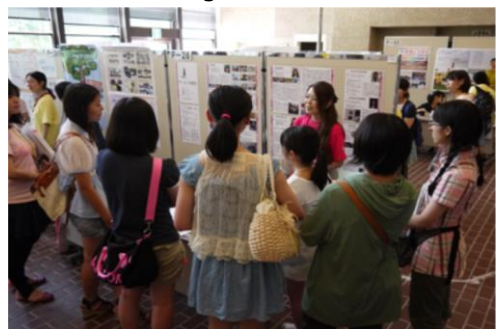
"Regional Revitalization Seminar with a Focus on the Recovery of Kamaishi City."

- Social-contribution activities of science education for youth.



Activities of an action group called "The Science Dream Club" Line tracing car production classroom at Kawaguchi Municipal Junior High School.

- Activities for supporting the careers of female engineers and making social contributions.



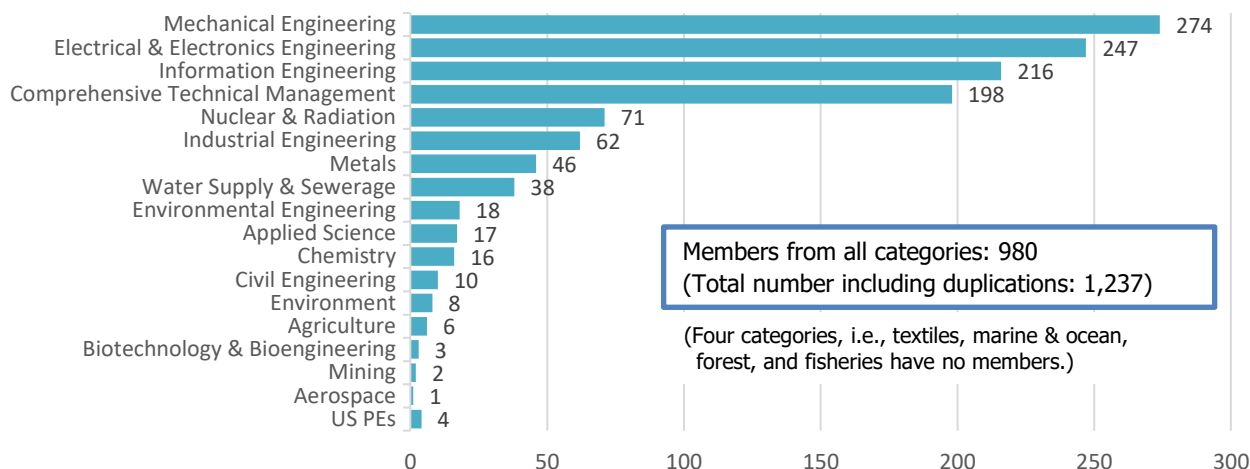
*Contribution to "Summer school" for female junior and senior high school students, by an action group called "ENCHANT*3 技魔女"*

■ Current Status of Membership [as of May 2023]

*Number of members: 980

active service: 558; special members (OBs): 422

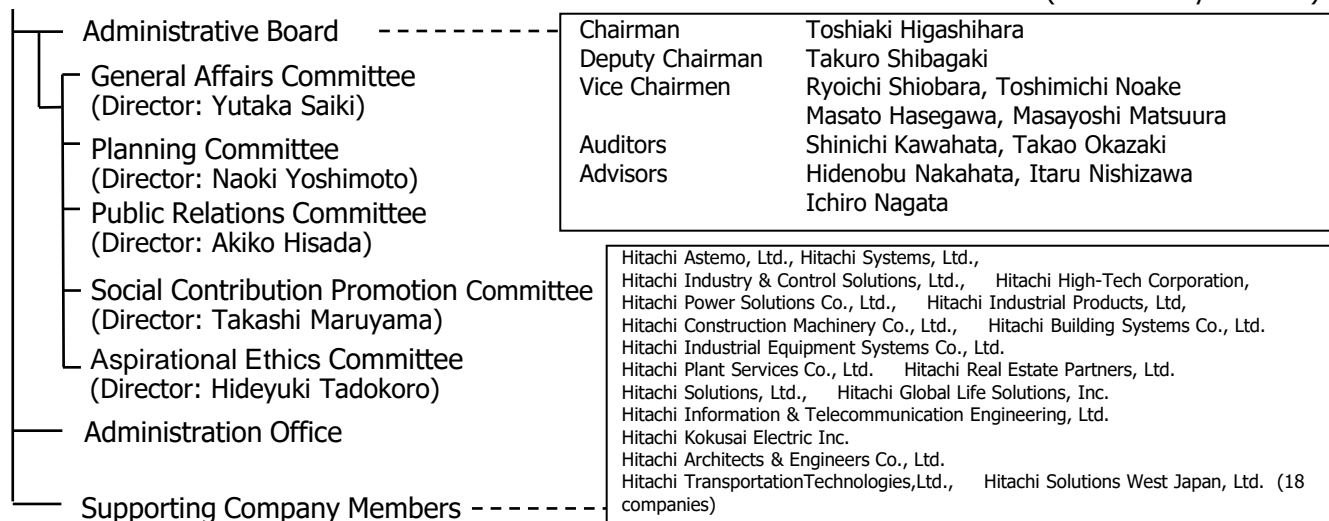
*New qualified members in fiscal year 2023: 25 (Hitachi Ltd.: 8, group companies: 17)



■ Structure of Hitachi PE Assoc.

Hitachi PE Association

(as of Fiscal year 2023)



Mission Statement of Hitachi Profession Engineers Association

In accordance with the principles of the Association and taking pride in being Professional Engineers bearing responsibility for advancing science and technology, we will maintain a global viewpoint in accord with our values of "harmony" and "strength." We will also contribute to the prosperity of Hitachi Group as well as society as a whole in the following ways.

- Take up the challenge of developing more advanced technologies while striving to improve our ability and strengthen our character
- Strive to deserve the meritorious title of Professional Engineer as an example in the workplace
- Perform actions to create the technologies needed by Hitachi Group

Contact details: Administration Office of Hitachi Profession Engineers Association

c/o Hitachi Ltd., Research and Development Group,

TEL: +81 -80-8719-9080 FAX: +81 -42-327-7695 e-mail: gijutusi.kenkai.sh@hitachi.com

1-280 Higashi-Koigakubo, Kokubunji, Tokyo 185-8601, Japan